

CARMA1 Antibody

Rabbit Polyclonal

Antigen Affinity Purified

Protein ID NP_115791.3

Catalog No. A302-542A

GeneID 84433

Lot No. A302-542A-1



APPLICATIONS	WB, IP
SPECIES REACTIVITY	Human
PRESUMED REACTIVITY	Based on 100% sequence identity, this antibody is predicted to react with Mouse
AMOUNT	100 µl
CONCENTRATION	1000 µg/ml
STORAGE/SHELF LIFE	2 - 8° C / 1 year from date of receipt
PHYSICAL STATE	Liquid
BUFFER	Tris-citrate/phosphate buffer, pH 7 to 8 containing 0.09% Sodium Azide
ISOTYPE	IgG
ORIGIN	USA
PRODUCTION PROCEDURES	Antibody was affinity purified using an epitope specific to CARMA1 immobilized on solid support.

The epitope recognized by A302-542A maps to a region between residue 475 and 525 of human card-maguk protein 1 using the numbering given in entry NP_115791.3 (GeneID 84433).

Antibody concentration was determined by extinction coefficient: absorbance at 280 nm of 1.4 equals 1.0 mg of IgG.

APPLICATIONS Centrifuge tube to remove product from lid. Optimal working dilutions should be determined experimentally by the investigator. Prepare working dilution immediately before use.

Western Blot 1:2,000 – 1:10,000

Immunoprecipitation 2 – 5 µg/mg lysate

APPLICATION NOTES Western blot of immunoprecipitates performed using Normal Pig Serum (Cat. No. S100-020), Goat anti-Rabbit Light Chain HRP Conjugate (Cat. No. A120-113P) and 4-8% SDS-PAGE (link to IP-western blot protocol in Additional Info section below).

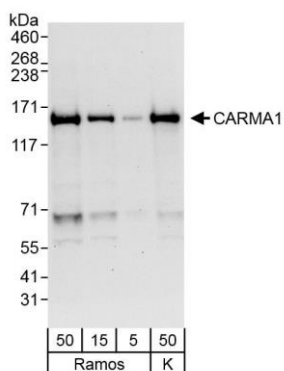
Western blot of lysates performed using standard western blot reagents and 4-8% SDS-PAGE.

ADDITIONAL INFO <https://www.bethyl.com/product/A302-542A>

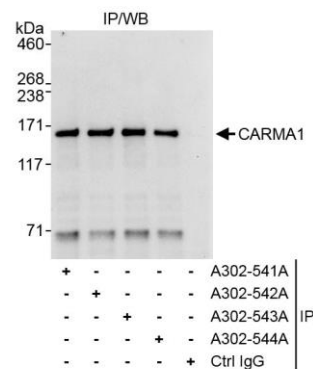
Use the link above to view SDS, a current list of citations, and other product specific information.

IP-western blot protocol https://www.bethyl.com/content/protocol_IP_WB

This document certifies that this product has met all of the quality control standards defined by Bethyl Laboratories, Inc.
Eric McIntush, PhD | Chief Scientific Officer Date: November 12, 2019



Detection of human CARMA1 by western blot. *Samples:* Whole cell lysate from Ramos (5, 15, and 50 µg) and K-562 (K; 50 µg) cells. *Antibody:* Affinity purified rabbit anti-CARMA1 antibody A302-542A (lot A302-542A-1) used at 0.04 µg/ml. *Detection:* Chemiluminescence with an exposure time of 3 minutes.



Detection of human CARMA1 by western blot of immunoprecipitates. *Samples:* Whole cell lysate (1 mg for IP, 20% of IP loaded) from Ramos cells. *Antibodies:* Affinity purified rabbit anti-CARMA1 antibody A302-542A (lot A302-542A-1) used for IP at 10 µg/mg lysate. CARMA1 was also immunoprecipitated by rabbit anti-CARMA1 antibodies A302-541A, A302-543A and A302-544A, which recognize downstream epitopes. For blotting immunoprecipitated CARMA1, A302-542A was used at 1.0 µg/ml. *Detection:* Chemiluminescence with exposure time of 10 seconds.