

# CLOCK Antibody

Rabbit Polyclonal

Antigen Affinity Purified	Protein ID	NP_004889.1
Catalog No. A302-618A	GeneID	9575
Lot No. A302-618A-3		

<b>APPLICATIONS</b>	WB, IP
<b>SPECIES REACTIVITY</b>	Human, Mouse
<b>PRESUMED REACTIVITY</b>	Based on 100% sequence identity, this antibody is predicted to react with Orangutan
<b>AMOUNT</b>	100 µl
<b>CONCENTRATION</b>	1000 µg/ml
<b>STORAGE/SHELF LIFE</b>	2 – 8°C / 1 year from date of receipt
<b>PHYSICAL STATE</b>	Liquid
<b>BUFFER</b>	Tris-citrate/phosphate buffer, pH 7 to 8 containing 0.09% Sodium Azide
<b>ISOTYPE</b>	IgG
<b>ORIGIN</b>	USA
<b>PRODUCTION PROCEDURES</b>	Antibody was affinity purified using an epitope specific to CLOCK immobilized on solid support.

The epitope recognized by A302-618A maps to a region between residue 796 and 846 of human circadian locomotor output cycles kaput protein using the numbering given in entry NP\_004889.1 (GeneID 9575).

Antibody concentration was determined by extinction coefficient: absorbance at 280 nm of 1.4 equals 1.0 mg of IgG.

**APPLICATIONS** Centrifuge tube to remove product from lid. Optimal working dilutions should be determined experimentally by the investigator. Prepare working dilution immediately before use.

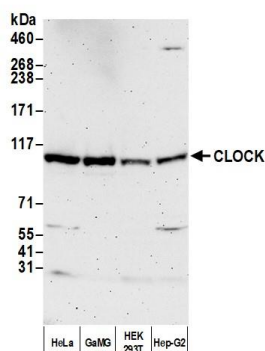
Western Blot 1:2,000 – 1:10,000

Immunoprecipitation 2 – 10 µg/mg lysate

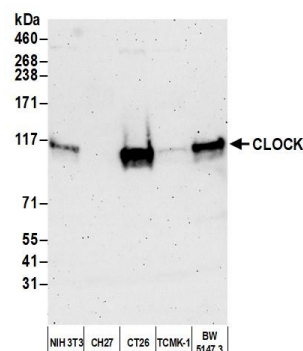
**ADDITIONAL INFO** <https://www.bethyl.com/product/A302-618A>

Use the link above to view SDS, a current list of citations, and other product specific information.  
IP-western blot protocol: [https://www.bethyl.com/content/protocol\\_IP\\_WB](https://www.bethyl.com/content/protocol_IP_WB)

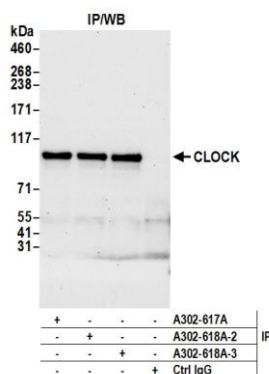
This document certifies that this product has met all of the quality control standards defined by Bethyl Laboratories, Inc.  
Michael Spencer, PhD Date: January 12, 2022



**Detection of human CLOCK by western blot.** *Samples:* Whole cell lysate (50 µg) from HeLa, GaMG, HEK293T, and Hep-G2 cells prepared using NETN lysis buffer. *Antibody:* Affinity purified rabbit anti-CLOCK antibody (A302-618A lot 3) used for WB at 0.1 µg/ml. *Detection:* Chemiluminescence with an exposure time of 3 minutes.



**Detection of mouse CLOCK by western blot.** *Samples:* Whole cell lysate (50 µg) from NIH 3T3, CH27, CT26, TCMK-1, and BW5147.3 cells prepared using NETN lysis buffer. *Antibody:* Affinity purified rabbit anti-CLOCK antibody (A302-618A lot 3) used for WB at 0.1 µg/ml. *Detection:* Chemiluminescence with an exposure time of 3 minutes.



**Detection of human CLOCK by western blot of immunoprecipitates.** *Samples:* Whole cell lysate (1.0 mg per IP reaction; 20% of IP loaded) from HeLa cells prepared using NETN lysis buffer. *Antibodies:* Affinity purified rabbit anti-CLOCK antibody (A302-618A lot 3) used for IP at 6 µg per reaction. CLOCK was also immunoprecipitated by a previous lot of this antibody (A302-618A lot 2) and a second antibody against a different epitope of CLOCK (A302-617A). For blotting immunoprecipitated CLOCK, A302-618A was used at 0.1 µg/ml. *Detection:* Chemiluminescence with an exposure time of 30 seconds.