

CLOCK Antibody

Rabbit Polyclonal

Antigen Affinity Purified Protein ID NP_004889.1

Catalog No. A302-618A-M GeneID 9575

Lot No. A302-618A-M-3

APPLICATIONS	WB, IP
SPECIES REACTIVITY	Human, Mouse
PRESUMED REACTIVITY	Based on 100% sequence identity, this antibody is predicted to react with Orangutan
AMOUNT	100 µl (10 blots)
CONCENTRATION	100 µg/ml
STORAGE/SHELF LIFE	2 – 8°C / 1 year from date of receipt
PHYSICAL STATE	Liquid
BUFFER	Tris-buffered Saline containing 0.1% BSA and 0.09% Sodium Azide
ISOTYPE	IgG
ORIGIN	USA
PRODUCTION PROCEDURES	Antibody was affinity purified using an epitope specific to CLOCK immobilized on solid support.

The epitope recognized by A302-618A-M maps to a region between residue 796 and 846 of human circadian locomotor output cycles kaput protein using the numbering given in entry NP_004889.1 (GeneID 9575).

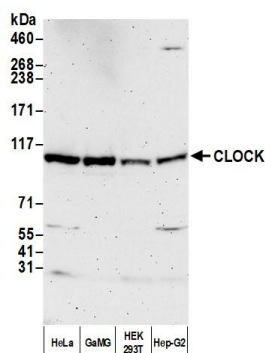
APPLICATIONS Centrifuge tube to remove product from lid. Optimal working dilutions should be determined experimentally by the investigator. Prepare working dilution immediately before use.

Western Blot 1:1000

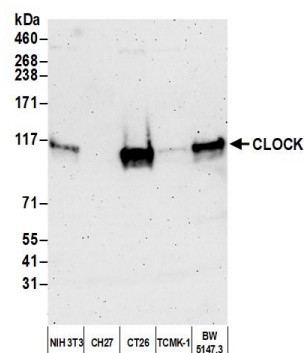
Immunoprecipitation The antibody contained within A302-618A-M has been qualified for use in immunoprecipitation; however, we recommend using the alternative formulation of this antibody found as product A302-618A.

ADDITIONAL INFO <https://www.bethyl.com/product/A302-618A-M>
Use the link above to view SDS, a current list of citations, and other product specific information.
IP-western blot protocol: https://www.bethyl.com/content/protocol_IP_WB

This document certifies that this product has met all of the quality control standards defined by Bethyl Laboratories, Inc.
Michael Spencer, PhD Date: January 12, 2022



Detection of human CLOCK by western blot. *Samples:* Whole cell lysate (50 μ g) from HeLa, GaMG, HEK293T, and Hep-G2 cells prepared using NETN lysis buffer. *Antibody:* Affinity purified rabbit anti-CLOCK antibody (A302-618A-M lot 3) used for WB at 1:1000. *Detection:* Chemiluminescence with an exposure time of 3 minutes.



Detection of mouse CLOCK by western blot. *Samples:* Whole cell lysate (50 μ g) from NIH 3T3, CH27, CT26, TCMK-1, and BW5147.3 cells prepared using NETN lysis buffer. *Antibody:* Affinity purified rabbit anti-CLOCK antibody (A302-618A-M lot 3) used for WB at 1:1000. *Detection:* Chemiluminescence with an exposure time of 3 minutes.