

PCTAIRE 2 Antibody

Rabbit Polyclonal

Antigen Affinity Purified

Protein ID NP_002586.2

Catalog No. A302-674A

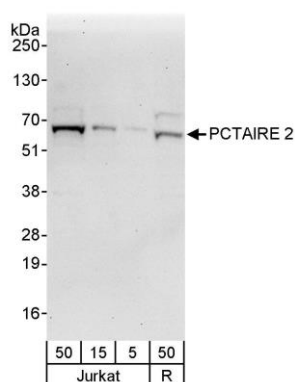
GeneID 5128

Lot No. A302-674A-1

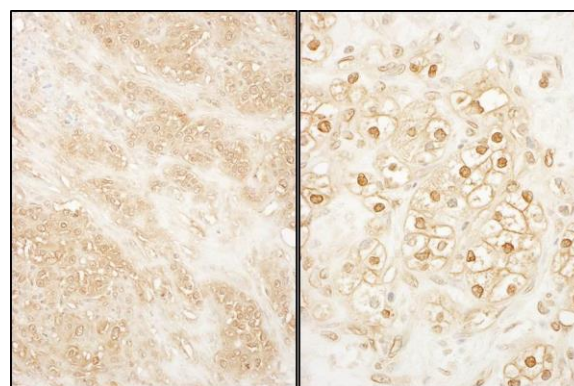


APPLICATIONS	WB, IHC
SPECIES REACTIVITY	Human
AMOUNT	100 µl
CONCENTRATION	1000 µg/ml
STORAGE/SHELF LIFE	2 - 8° C / 1 year from date of receipt
PHYSICAL STATE	Liquid
BUFFER	Tris-citrate/phosphate buffer, pH 7 to 8 containing 0.09% Sodium Azide
ISOTYPE	IgG
ORIGIN	USA
PRODUCTION PROCEDURES	Antibody was affinity purified using an epitope specific to PCTAIRE 2 immobilized on solid support. The epitope recognized by A302-674A maps to a region between residue 1 and 50 of human PCTAIRE protein kinase 2 using the numbering given in entry NP_002586.2 (GeneID 5128). Antibody concentration was determined by extinction coefficient: absorbance at 280 nm of 1.4 equals 1.0 mg of IgG.
APPLICATIONS	Centrifuge tube to remove product from lid. Optimal working dilutions should be determined experimentally by the investigator. Prepare working dilution immediately before use. Western Blot 1:2,000 - 1:10,000 Immunoprecipitation Not recommended Immunohistochemistry 1:500 - 1:2,000. Epitope retrieval with citrate buffer pH 6.0 is recommended for FFPE tissue sections.
APPLICATION NOTES	Western blot of lysates performed using standard western blot reagents and 4-20% SDS-PAGE.
IHC HUMAN CONTROLS	Breast Carcinoma, Kidney, Ovarian Carcinoma
ADDITIONAL INFO	https://www.bethyl.com/product/A302-674A Use the link above to view SDS, a current list of citations, and other product specific information.

This document certifies that this product has met all of the quality control standards defined by Bethyl Laboratories, Inc.
Eric McIntush, PhD | Chief Scientific Officer Date: June 21, 2019



Detection of human PCTAIRE 2 by western blot. *Samples:* Whole cell lysate from Jurkat (5, 15 and 50 µg) and Ramos (R; 50 µg) cells. *Antibodies:* Affinity purified rabbit anti-PCTAIRE 2 antibody A302-674A used for WB at 0.4 µg/ml. *Detection:* Chemiluminescence with an exposure time of 30 seconds.



Detection of human PCTAIRE 2 by immunohistochemistry. *Sample:* FFPE section of human breast carcinoma (left) and kidney clear cell carcinoma (right). *Antibody:* Affinity purified rabbit anti-PCTAIRE 2 (Cat. No. A302-674A Lot1) used at a dilution of 1:1,000 (1 µg/ml). *Detection:* DAB