

Importin 4 Antibody

Rabbit Polyclonal

Antigen Affinity Purified

Protein ID NP_078934.3

Catalog No. A302-724A

GeneID 79711

Lot No. A302-724A-1



APPLICATIONS IP, IHC

SPECIES REACTIVITY Human

AMOUNT 100 µl

CONCENTRATION 1000 µg/ml

STORAGE/SHELF LIFE 2 - 8° C / 1 year from date of receipt

PHYSICAL STATE Liquid

BUFFER Tris-citrate/phosphate buffer, pH 7 to 8 containing 0.09% Sodium Azide

ISOTYPE IgG

ORIGIN USA

PRODUCTION PROCEDURES Antibody was affinity purified using an epitope specific to Importin 4 immobilized on solid support.

The epitope recognized by A302-724A maps to a region between residue 350 and 400 of human Importin 4 using the numbering given in entry NP_078934.3 (GeneID 79711).

Antibody concentration was determined by extinction coefficient: absorbance at 280 nm of 1.4 equals 1.0 mg of IgG.

APPLICATIONS Centrifuge tube to remove product from lid. Optimal working dilutions should be determined experimentally by the investigator. Prepare working dilution immediately before use.

Western Blot Not recommended. A302-724A has not performed satisfactorily when used for WB of Importin 4 in crude preparations (e.g. whole cell lysate). This antibody can be used for WB of enriched (e.g. immunoprecipitated) sources of Importin 4.

Immunoprecipitation 5 - 15 µg/mg lysate

Immunohistochemistry 1:1,000 - 1:5,000. Epitope retrieval with citrate buffer pH 6.0 is recommended for FFPE tissue sections.

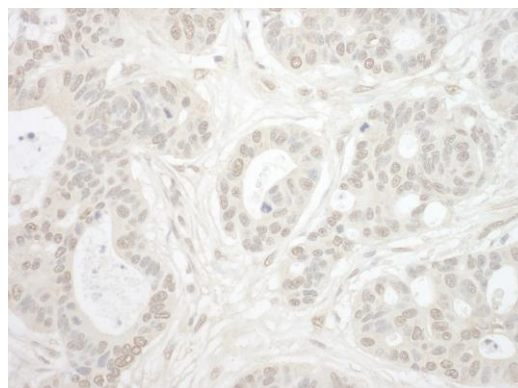
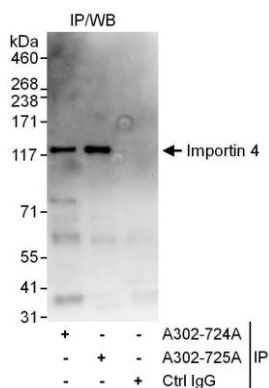
APPLICATION NOTES Western blot of immunoprecipitates performed using Normal Pig Serum (Cat. No. S100-020), Goat anti-Rabbit Light Chain HRP Conjugate (Cat. No. A120-113P) and 4-8% SDS-PAGE (link to IP-western blot protocol in Additional Info section below).

IHC HUMAN CONTROLS Ovarian Carcinoma

ADDITIONAL INFO <https://www.bethyl.com/product/A302-724A>

Use the link above to view SDS, a current list of citations, and other product specific information. IP-western blot protocol: https://www.bethyl.com/content/protocol_IP_WB

This document certifies that this product has met all of the quality control standards defined by Bethyl Laboratories, Inc.
Eric McIntush, PhD | Chief Scientific Officer Date: June 21, 2019



Detection of human Importin 4 by western blot of immunoprecipitates. *Samples:* Whole cell lysate (1 mg for IP, 20% of IP loaded) from HeLa cells. *Antibodies:* Affinity purified rabbit anti-Importin 4 antibody A302-724A used for IP at 10 µg/mg lysate. Importin 4 was also immunoprecipitated by rabbit anti-Importin 4 antibody A302-725A, which recognizes a downstream epitope. For blotting immunoprecipitated Importin 4, A302-724A was used at 1 µg/ml. *Detection:* Chemiluminescence with an exposure time of 5 seconds.

Detection of human Importin 4 by immunohistochemistry. *Sample:* FFPE section of human ovarian carcinoma. *Antibody:* Affinity purified rabbit anti-Importin 4 (Cat. No. A302-724A) used at a dilution of 1:5,000 (0.2µg/ml) *Detection:* DAB