

Bin1 Antibody

Rabbit Polyclonal

Antigen Affinity Purified Protein ID NP_647593.1

Catalog No. A302-728A-T GenelD 274

Lot No. A302-728A-T-1

APPLICATIONS	IP, IHC
SPECIES REACTIVITY	Human
PRESUMED REACTIVITY	Based on 100% sequence identity, this antibody is predicted to react with Mouse and Rat
AMOUNT	10 µl
CONCENTRATION	1000 µg/ml
STORAGE/SHELF LIFE	2 – 8°C / 1 year from date of receipt
PHYSICAL STATE	Liquid
BUFFER	Tris-citrate/phosphate buffer, pH 7 to 8 containing 0.09% Sodium Azide
ISOTYPE	IgG
ORIGIN	USA
PRODUCTION PROCEDURES	Antibody was affinity purified using an epitope specific to Bin1 immobilized on solid support.

The epitope recognized by A302-728A-T maps to a region between residue 300 and 350 of human Bridging Integrator 1 using the numbering given in entry NP_647593.1 (GeneID 274).

Immunoglobulin concentration was determined by extinction coefficient: absorbance at 280 nm of 1.4 equals 1.0 mg of IgG.

APPLICATIONS Centrifuge tube to remove product from lid. Optimal working dilutions should be determined experimentally by the investigator. Prepare working dilution immediately before use.

Western Blot Not recommended. Use rabbit anti-Bin1 antibody A302-729A.

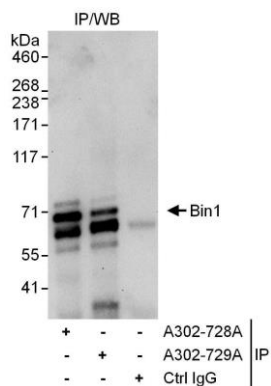
Immunoprecipitation 5 – 15 µg/mg lysate

Immunohistochemistry 1:500 – 1:2,000. Epitope retrieval with citrate buffer pH 6.0 is recommended for FFPE tissue sections.

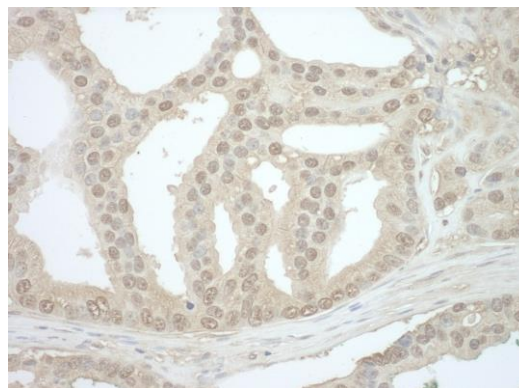
ADDITIONAL INFO <https://www.bethyl.com/product/A302-728A-T>

Use the link above to view SDS, a current list of citations, and other product specific information. IP-western blot protocol: https://www.bethyl.com/content/protocol_IP_WB

This document certifies that this product has met all of the quality control standards defined by Bethyl Laboratories, Inc.
Michael Spencer, PhD Date: June 6, 2022



Detection of human Bin1 by western blot of immunoprecipitates. *Samples:* Whole cell lysate (1 mg for IP, 20% of IP loaded) from HeLa cells. *Antibodies:* Affinity purified rabbit anti-Bin1 antibody A302-728A used for IP at 10 $\mu\text{g}/\text{mg}$ lysate. Bin1 was also immunoprecipitated by rabbit anti-Bin1 antibody A302-729A, which recognizes a downstream epitope. For blotting immunoprecipitated Bin1, A302-729A was used at 1 $\mu\text{g}/\text{ml}$. *Detection:* Chemiluminescence with an exposure time of 30 seconds.



Detection of human Bin1 by immunohistochemistry. *Sample:* FFPE section of human prostate carcinoma. *Antibody:* Affinity purified rabbit anti-Bin1 (Cat. No. A302-728A) used at a dilution of 1:1,000 (1 $\mu\text{g}/\text{ml}$) *Detection:* DAB