

ORC3 Antibody

Rabbit Polyclonal

Antigen Affinity Purified

Protein ID NP_036513.2

Catalog No. A302-736A

GeneID 23595

Lot No. A302-736A-1



APPLICATIONS	WB, IHC
SPECIES REACTIVITY	Human
AMOUNT	100 µl
CONCENTRATION	200 µg/ml
STORAGE/SHELF LIFE	2 - 8° C / 1 year from date of receipt
PHYSICAL STATE	Liquid
BUFFER	Tris-buffered Saline containing 0.1% BSA and 0.09% Sodium Azide
ISOTYPE	IgG
ORIGIN	USA
PRODUCTION PROCEDURES	Antibody was affinity purified using an epitope specific to ORC3 immobilized on solid support.

The epitope recognized by A302-736A maps to a region between residue 325 and 375 of human Origin Recognition Complex, Subunit 3-like using the numbering given in entry NP_036513.2 (GeneID 23595).

Antibody concentration was determined by extinction coefficient: absorbance at 280 nm of 1.4 equals 1.0 mg of IgG.

APPLICATIONS Centrifuge tube to remove product from lid. Optimal working dilutions should be determined experimentally by the investigator. Prepare working dilution immediately before use.

Western Blot 1:2,000 - 1:10,000

Immunoprecipitation Not recommended

Immunohistochemistry 1:100 - 1:500. Epitope retrieval with citrate buffer pH 6.0 is recommended for FFPE tissue sections.

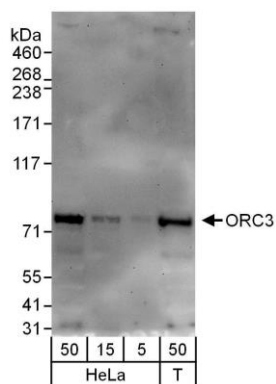
APPLICATION NOTES Western blot of lysates performed using standard western blot reagents and 4-8% SDS-PAGE.

IHC HUMAN CONTROLS Breast Carcinoma, Colon Carcinoma, Ovarian Carcinoma

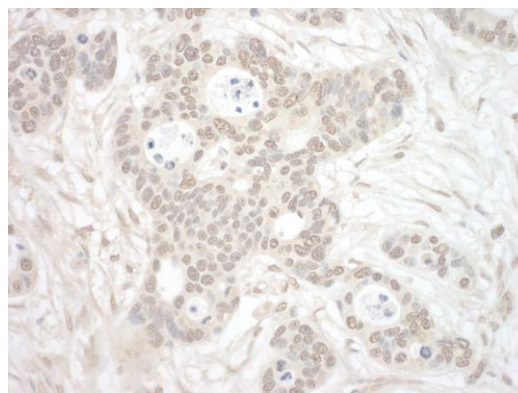
ADDITIONAL INFO <https://www.bethyl.com/product/A302-736A>

Use the link above to view SDS, a current list of citations, and other product specific information.

This document certifies that this product has met all of the quality control standards defined by Bethyl Laboratories, Inc.
Eric McIntush, PhD | Chief Scientific Officer Date: June 21, 2019



Detection of human ORC3 by western blot. *Samples:* Whole cell lysate from HeLa (5, 15 and 50 μ g) and HEK293T (T; 50 μ g) cells. *Antibodies:* Affinity purified rabbit anti-ORC3 antibody A302-736A used for WB at 0.04 μ g/ml. *Detection:* Chemiluminescence with an exposure time of 30 seconds.



Detection of human ORC3 by immunohistochemistry. *Sample:* FFPE section of human breast carcinoma. *Antibody:* Affinity purified rabbit anti-ORC3 (Cat. No. A302-736A) used at a dilution of 1:200 (1 μ g/ml) *Detection:* DAB