

C/EBP beta Antibody

Rabbit Polyclonal

Antigen Affinity Purified

Protein ID NP_005185.2

Catalog No. A302-738A

GeneID 1051

Lot No. A302-738A-2



APPLICATIONS	WB, IP, IHC
SPECIES REACTIVITY	Human
PRESUMED REACTIVITY	Based on 100% sequence identity, this antibody is predicted to react with Mouse, Rat and Bovine
AMOUNT	100 µl
CONCENTRATION	1000 µg/ml
STORAGE/SHELF LIFE	2 - 8° C / 1 year from date of receipt
PHYSICAL STATE	Liquid
BUFFER	Tris-citrate/phosphate buffer, pH 7 to 8 containing 0.09% Sodium Azide
ISOTYPE	IgG
ORIGIN	USA
PRODUCTION PROCEDURES	Antibody was affinity purified using an epitope specific to C/EBP beta immobilized on solid support.

The epitope recognized by A302-738A maps to a region between residue 50 and 100 of human CCAAT/Enhancer Binding Protein (C/EBP), beta using the numbering given in entry NP_005185.2 (GeneID 1051).

Antibody concentration was determined by extinction coefficient: absorbance at 280 nm of 1.4 equals 1.0 mg of IgG.

APPLICATIONS Centrifuge tube to remove product from lid. Optimal working dilutions should be determined experimentally by the investigator. Prepare working dilution immediately before use.

Western Blot 1:2,000 - 1:10,000

Immunoprecipitation 2 - 10 µg/mg lysate

Immunohistochemistry 1:500 - 1:2,000. Epitope retrieval with citrate buffer pH 6.0 is recommended for FFPE tissue sections.

APPLICATION NOTES Western blot of immunoprecipitates performed using Normal Pig Serum (Cat. No. S100-020), Goat anti-Rabbit Light Chain HRP Conjugate (Cat. No. A120-113P) and 4-20% SDS-PAGE (link to IP-western blot protocol in Additional Info section below).

Western blot of lysates performed using standard western blot reagents and 4-20% SDS-PAGE.

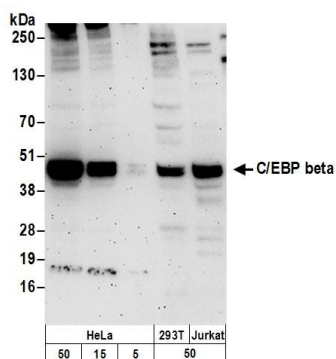
IHC HUMAN CONTROLS Breast Carcinoma, Osteosarcoma, Prostate Carcinoma

ADDITIONAL INFO <https://www.bethyl.com/product/A302-738A>

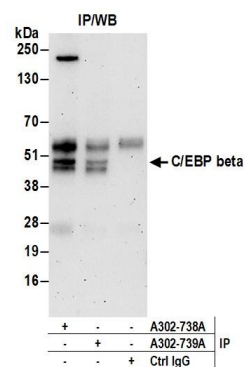
Use the link above to view SDS, a current list of citations, and other product specific information.

IP-western blot protocol: https://www.bethyl.com/content/protocol_IP_WB

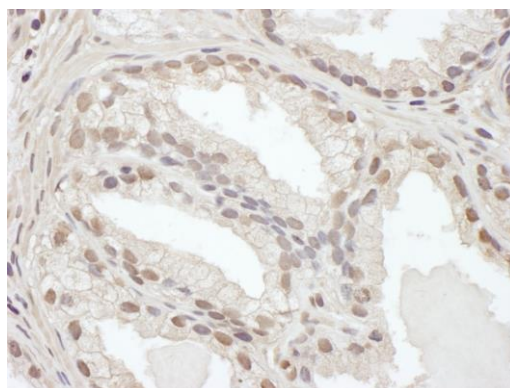
This document certifies that this product has met all of the quality control standards defined by Bethyl Laboratories, Inc.
Eric McIntush, PhD | Chief Scientific Officer Date: June 21, 2019



Detection of human C/EBP beta by western blot. *Samples:* Whole cell lysate from HeLa (50, 15, 5 µg), HEK293T (50 µg), and Jurkat (50 µg) cells prepared using NETN lysis buffer. *Antibodies:* Affinity purified rabbit anti-C/EBP beta antibody A302-738A (lot A302-738A-2) used for WB at 0.1 µg/ml. *Detection:* Chemiluminescence with an exposure time of 3 minutes.



Detection of human C/EBP beta by western blot of immunoprecipitates. *Samples:* Whole cell lysate (0.5 or 1.0 mg per IP reaction; 20% of IP loaded) from HeLa cells prepared using NETN lysis buffer. *Antibodies:* Affinity purified rabbit anti-C/EBP beta antibody A302-738A (lot A302-738A-2) used for IP at 6 µg per reaction. C/EBP beta was also immunoprecipitated by rabbit anti-C/EBP beta antibody A302-739A. For blotting immunoprecipitated C/EBP beta, A302-738A was used at 1 µg/ml. *Detection:* Chemiluminescence with an exposure time of 3 minutes.



Detection of human C/EBP beta by immunohistochemistry. *Sample:* FFPE section of human prostate carcinoma. *Antibody:* Affinity purified rabbit anti-C/EBP beta (Cat. No. A302-738A Lot2) used at a dilution of 1:1,000 (1 µg/ml). *Detection:* DAB