

TRAF4 Antibody

Rabbit Polyclonal

Antigen Affinity Purified

Protein ID NP_004286.2

Catalog No. A302-841A

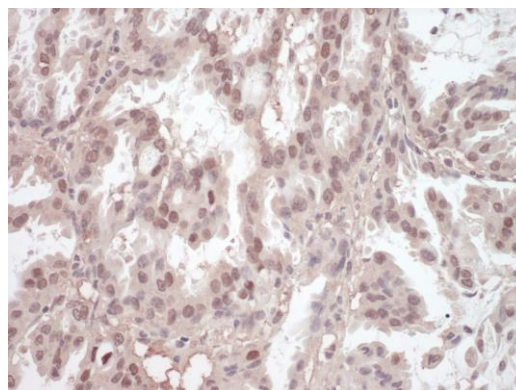
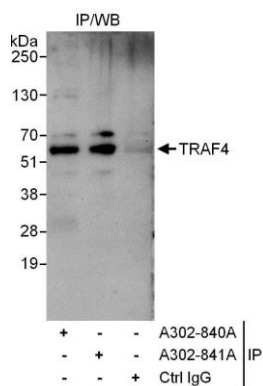
GeneID 9618

Lot No. A302-841A-1



APPLICATIONS	IP, IHC-P
SPECIES REACTIVITY	Human
ISOTYPE	IgG
AMOUNT	100 µl at 1 mg/ml
STORAGE/SHELF LIFE	2 - 8° C / 1 year from date of receipt
PHYSICAL STATE	Liquid
BUFFER	Tris-citrate/phosphate buffer, pH 7 to 8 containing 0.09% Sodium Azide
ORIGIN	USA
PRODUCTION PROCEDURES	Antibody was affinity purified using an epitope specific to TRAF4 immobilized on solid support. The epitope recognized by A302-841A maps to a region between residue 420 and 470 of human TNF Receptor-Associated Factor 4 using the numbering given in entry NP_004286.2 (GeneID 9618). Antibody concentration was determined by extinction coefficient: absorbance at 280 nm of 1.4 equals 1.0 mg of IgG.
APPLICATIONS	Centrifuge tube to remove product from lid. Optimal working dilutions should be determined experimentally by the investigator. Prepare working dilution immediately before use. Western Blot Not Recommended Immunoprecipitation 2 to 5 µg/mg lysate Immunohistochemistry 1:500 to 1:2,000. Epitope retrieval with citrate buffer pH6.0 is recommended for FFPE tissue sections.
APPLICATION NOTES	Western blot of immunoprecipitates performed using ReliaBLOT® Reagents (Cat. No. WB120) and 4-20% SDS-PAGE.
IHC HUMAN CONTROLS	Lung Adenocarcinoma, Non-Small Cell Lung Cancer
ADDITIONAL INFO	http://www.bethyl.com/product/A302-841A Use the link above to view SDS, a current list of citations, and other product specific information.

TRAF4 Antibody A302-841A



Detection of Human TRAF4 by Western Blot of Immunoprecipitates. *Samples:* Whole cell lysate (1 mg for IP, 20% of IP loaded) from HeLa cells. *Antibodies:* Affinity purified rabbit anti-TRAF4 antibody A302-841A used for IP at 3 µg/mg lysate. TRAF4 was also immunoprecipitated by rabbit anti-TRAF4 antibody A302-840A, which recognizes an upstream epitope. For blotting immunoprecipitated TRAF4, A302-840A was used at 1 µg/ml. *Detection:* Chemiluminescence with an exposure time of 30 seconds.

Detection of Human TRAF4 by Immunohistochemistry. *Sample:* FFPE section of human lung carcinoma. *Antibody:* Affinity purified rabbit anti-TRAF4 (Cat. No. A302-841A Lot1) used at a dilution of 1:1,000 (1 µg/ml). *Detection:* Vector Laboratories ImmPACT NovaRED Peroxidase Substrate