

MAX Antibody

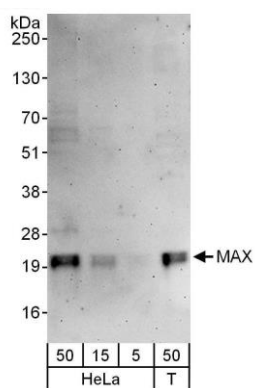
Rabbit Polyclonal

Antigen Affinity Purified Protein ID NP_002373.3
Catalog No. A302-866A-M GeneID 4149
Lot No. A302-866A-M-1



APPLICATIONS	WB, IP, IHC
SPECIES REACTIVITY	Human
PRESUMED REACTIVITY	Based on 100% sequence identity, this antibody is predicted to react with Mouse, Chicken and Cat
AMOUNT	100 µl (10 blots)
CONCENTRATION	100 µg/ml
STORAGE/SHELF LIFE	2 - 8° C / 1 year from date of receipt
PHYSICAL STATE	Liquid
BUFFER	Tris-buffered Saline containing 0.1% BSA and 0.09% Sodium Azide
ISOTYPE	IgG
ORIGIN	USA
PRODUCTION PROCEDURES	Antibody was affinity purified using an epitope specific to MAX immobilized on solid support. The epitope recognized by A302-866A-M maps to a region between residue 110 and 160 of human MYC Associated Factor X using the numbering given in entry NP_002373.3 (GeneID 4149).
APPLICATIONS	Centrifuge tube to remove product from lid. Optimal working dilutions should be determined experimentally by the investigator. Prepare working dilution immediately before use. Western Blot 1:1000 Immunoprecipitation The antibody contained within A302-866A-M has been qualified for use in immunoprecipitation; however, we recommend using the alternative formulation of this antibody found as product A302-866A. Immunohistochemistry 1:50 - 1:200. Epitope retrieval with citrate buffer pH 6.0 is recommended for FFPE tissue sections.
APPLICATION NOTES	Western blot of immunoprecipitates performed using Normal Pig Serum (Cat. No. S100-020), Goat anti-Rabbit Light Chain HRP Conjugate (Cat. No. A120-113P) and 4-12% SDS-PAGE (link to IP-western blot protocol in Additional Info section below). Western blot of lysates performed using standard western blot reagents and 4-12% SDS-PAGE.
ADDITIONAL INFO	https://www.bethyl.com/product/A302-866A-M Use the link above to view SDS, a current list of citations, and other product specific information. IP-western blot protocol: https://www.bethyl.com/content/protocol_IP_WB

This document certifies that this product has met all of the quality control standards defined by Bethyl Laboratories, Inc.
Eric McIntush, PhD | Chief Scientific Officer Date: June 21, 2019



Detection of human MAX by western blot. *Samples:* Whole cell lysate (5, 15, and 50 µg) from HeLa and HEK293T (T; 50 µg) cells. *Antibody:* Affinity purified rabbit anti-MAX antibody A302-866A-M used at 1:1000. *Detection:* Chemiluminescence with an exposure time of 3 minutes.