

# RABGEF1 Antibody

Rabbit Polyclonal

Antigen Affinity Purified

Protein ID BAC87138.1

Catalog No. A302-922A

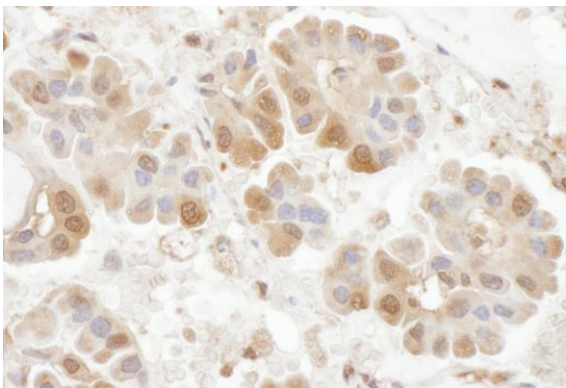
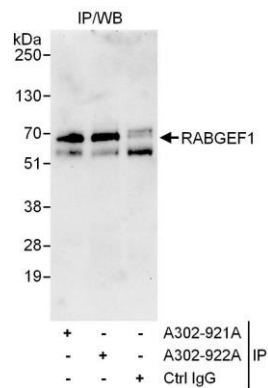
GeneID 27342

Lot No. A302-922A-1



<b>APPLICATIONS</b>	IP, IHC-P						
<b>SPECIES REACTIVITY</b>	Human						
<b>PRESUMED REACTIVITY</b>	Based on 100% sequence identity, this antibody is predicted to react with Mouse and Bovine						
<b>ISOTYPE</b>	IgG						
<b>AMOUNT</b>	100 µl at 1 mg/ml						
<b>STORAGE/SHELF LIFE</b>	2 - 8° C / 1 year from date of receipt						
<b>PHYSICAL STATE</b>	Liquid						
<b>BUFFER</b>	Tris-citrate/phosphate buffer, pH 7 to 8 containing 0.09% Sodium Azide						
<b>ORIGIN</b>	USA						
<b>PRODUCTION PROCEDURES</b>	Antibody was affinity purified using an epitope specific to RABGEF1 immobilized on solid support.  The epitope recognized by A302-922A maps to a region between residue 475 and 525 of human RAB Guanine Nucleotide Exchange Factor (GEF) 1 using the numbering given in entry BAC87138.1 (GeneID 27342).  Antibody concentration was determined by extinction coefficient: absorbance at 280 nm of 1.4 equals 1.0 mg of IgG.						
<b>APPLICATIONS</b>	Centrifuge tube to remove product from lid. Optimal working dilutions should be determined experimentally by the investigator. Prepare working dilution immediately before use.  <table><tr><td>Western Blot</td><td>Not Recommended</td></tr><tr><td>Immunoprecipitation</td><td>2 to 5 µg/mg lysate</td></tr><tr><td>Immunohistochemistry</td><td>1:500 to 1:2,000. Epitope retrieval with citrate buffer pH6.0 is recommended for FFPE tissue sections.</td></tr></table>	Western Blot	Not Recommended	Immunoprecipitation	2 to 5 µg/mg lysate	Immunohistochemistry	1:500 to 1:2,000. Epitope retrieval with citrate buffer pH6.0 is recommended for FFPE tissue sections.
Western Blot	Not Recommended						
Immunoprecipitation	2 to 5 µg/mg lysate						
Immunohistochemistry	1:500 to 1:2,000. Epitope retrieval with citrate buffer pH6.0 is recommended for FFPE tissue sections.						
<b>APPLICATION NOTES</b>	Western blot of immunoprecipitates performed using ReliaBLOT® Reagents (Cat. No. WB120) and 4-8% SDS-PAGE.						
<b>IHC HUMAN CONTROLS</b>	Breast Carcinoma, Colon Carcinoma, Lung Adenocarcinoma						
<b>ADDITIONAL INFO</b>	<a href="http://www.bethyl.com/product/A302-922A">http://www.bethyl.com/product/A302-922A</a>  Use the link above to view SDS, a current list of citations, and other product specific information.						

RABGEF1 Antibody A302-922A



**Detection of Human RABGEF1 by Western Blot of Immunoprecipitates.** *Samples:* Whole cell lysate (1 mg for IP, 20% of IP loaded) from HeLa cells. *Antibodies:* Affinity purified rabbit anti-RABGEF1 antibody A302-922A used for IP at 3 µg/mg lysate. RABGEF1 was also immunoprecipitated by rabbit anti-RABGEF1 antibody A302-921A, which recognizes an upstream epitope. For blotting immunoprecipitated RABGEF1, A302-921A was used at 1 µg/ml,. *Detection:* Chemiluminescence with an exposure time of 30 seconds.

**Detection of Human RABGEF1 by Immunohistochemistry.** *Sample:* FFPE section of human lung carcinoma. *Antibody:* Affinity purified rabbit anti- RABGEF1 (Cat. No. A302-922A Lot1) used at a dilution of 1:1,000 (1µg/ml). *Detection:* DAB

For in vitro laboratory use only. Not for any clinical, therapeutic or diagnostic use in humans or animals. Not for human or animal consumption. This product may not be resold or modified for resale without the prior written approval of Bethyl Laboratories, Inc. The information provided in this data sheet is believed to be correct but does not purport to be all-inclusive and is intended to be used as a guide. Bethyl Laboratories, Inc. shall not be liable or responsible in any way for use of either this information or the material supplied. Disposal of hazardous material may be subject to federal, state or local laws or regulations.