

# COMMD4 Antibody

Rabbit Polyclonal

Antigen Affinity Purified Protein ID NP\_060298.2

Catalog No. A302-972A-T GeneID 54939

Lot No. A302-972A-T-1

---

<b>APPLICATIONS</b>	WB
<b>SPECIES REACTIVITY</b>	Human
<b>AMOUNT</b>	10 µl
<b>CONCENTRATION</b>	1000 µg/ml
<b>STORAGE/SHELF LIFE</b>	2 – 8°C / 1 year from date of receipt
<b>PHYSICAL STATE</b>	Liquid
<b>BUFFER</b>	Tris-citrate/phosphate buffer, pH 7 to 8 containing 0.09% Sodium Azide
<b>ISOTYPE</b>	IgG
<b>ORIGIN</b>	USA
<b>PRODUCTION PROCEDURES</b>	Antibody was affinity purified using an epitope specific to COMMD4 immobilized on solid support.

The epitope recognized by A302-972A-T maps to a region between residue 149 and 199 of human COMM Domain Containing 4 using the numbering given in entry NP\_060298.2 (GeneID 54939).

**APPLICATIONS** Centrifuge tube to remove product from lid. Optimal working dilutions should be determined experimentally by the investigator. Prepare working dilution immediately before use.

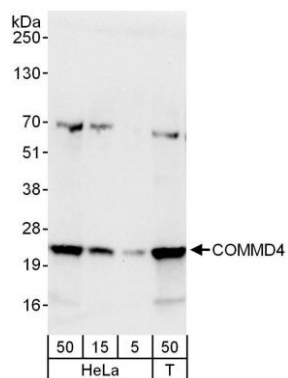
Western Blot 1:2,000 – 1:10,000

Immunoprecipitation Not recommended

**ADDITIONAL INFO** <https://www.bethyl.com/product/A302-972A-T>

Use the link above to view SDS, a current list of citations, and other product specific information.

This document certifies that this product has met all of the quality control standards defined by Bethyl Laboratories, Inc.  
Michael Spencer, PhD Date: June 6, 2022



**Detection of human COMMD4 by western blot.** *Samples:* Whole cell lysate from HeLa (5, 15 and 50  $\mu$ g for WB) and HEK293T (T; 50  $\mu$ g) cells. *Antibodies:* Affinity purified rabbit anti-COMMD4 antibody A302-972A used for WB at 0.4  $\mu$ g/ml. *Detection:* Chemiluminescence with an exposure time of 10 seconds.