

NHERF1 Antibody

Rabbit Polyclonal

Antigen Affinity Purified Protein ID NP_004243.1

Catalog No. A302-975A-T GenelD 9368

Lot No. A302-975A-T-1

APPLICATIONS	WB, IP, IHC
SPECIES REACTIVITY	Human
PRESUMED REACTIVITY	Based on 100% sequence identity, this antibody is predicted to react with Mouse, Rat, Chicken and Bovine
AMOUNT	10 µl
CONCENTRATION	200 µg/ml
STORAGE/SHELF LIFE	2 – 8°C / 1 year from date of receipt
PHYSICAL STATE	Liquid
BUFFER	Tris–buffered Saline containing 0.1% BSA and 0.09% Sodium Azide
ISOTYPE	IgG
ORIGIN	USA
PRODUCTION PROCEDURES	Antibody was affinity purified using an epitope specific to NHERF1 immobilized on solid support.

The epitope recognized by A302-975A-T maps to a region between residue 325 and 358 of human Sodium/Hydrogen Exchanger Regulatory Factor 1 using the numbering given in entry NP_004243.1 (GeneID 9368).

APPLICATIONS Centrifuge tube to remove product from lid. Optimal working dilutions should be determined experimentally by the investigator. Prepare working dilution immediately before use.

Western Blot 1:2,000 – 1:10,000

Immunoprecipitation 2 – 5 µg/mg lysate

Immunohistochemistry 1:100 – 1:500. Epitope retrieval with citrate buffer pH 6.0 is recommended for FFPE tissue sections.

ADDITIONAL INFO <https://www.bethyl.com/product/A302-975A-T>

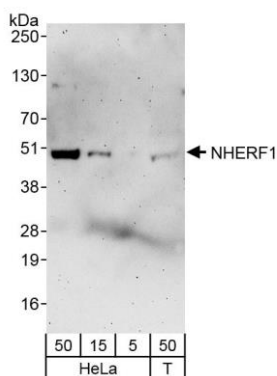
Use the link above to view SDS, a current list of citations, and other product specific information.

IP-western blot protocol: https://www.bethyl.com/content/protocol_IP_WB

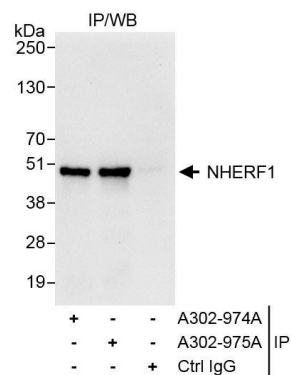
This document certifies that this product has met all of the quality control standards defined by Bethyl Laboratories, Inc.

Michael Spencer, PhD

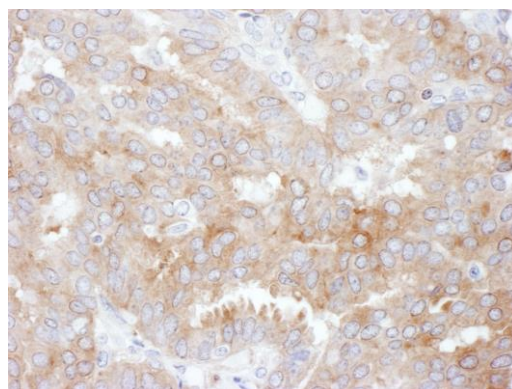
Date: June 6, 2022



Detection of human NHERF1 by western blot. *Samples:* Whole cell lysate from HeLa (5, 15 and 50 µg) and HEK293T (T; 50 µg) cells. *Antibodies:* Affinity purified rabbit anti-NHERF1 antibody A302-975A used for WB at 0.04 µg/ml. *Detection:* Chemiluminescence with exposure time of 3 minutes.



Detection of human NHERF1 by western blot of immunoprecipitates. *Samples:* Whole cell lysate from HeLa (1 mg for IP, 20% of IP loaded) cells. *Antibodies:* Affinity purified rabbit anti-NHERF1 antibody A302-975A used for WB at 1 µg/ml and for IP at 3 µg/mg lysate. NHERF1 was also immunoprecipitated by rabbit anti-NHERF1 antibody A302-974A. *Detection:* Chemiluminescence with exposure time of 3 seconds.



Detection of human NHERF1 by immunohistochemistry. *Sample:* FFPE section of human breast carcinoma. *Antibody:* Affinity purified rabbit anti-NHERF1 (Cat. No. A302-975A Lot1) used at a dilution of 1:200 (1µg/ml). *Detection:* DAB