

# DDX47 Antibody

Rabbit Polyclonal

Antigen Affinity Purified

Catalog No. A302-977A

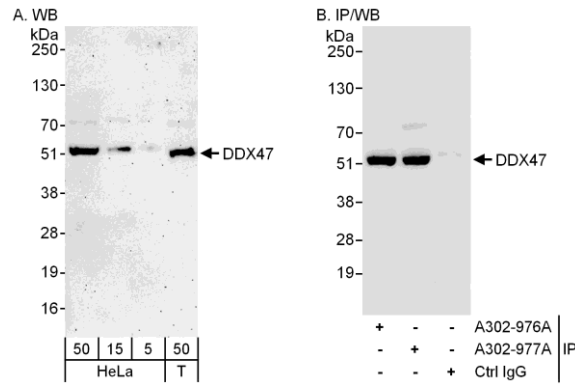
Lot No. A302-977A-1

Protein ID NP\_057439.2

Gene ID 51202



<b>APPLICATIONS</b>	WB, IP				
<b>REACTIVITY TESTED</b>	Human				
<b>PRESUMED REACTIVITY</b>	Based on 100% sequence identity, this antibody is predicted to react with Mouse, Rat, Bovine, Horse, Rabbit, Pig, Panda, Rhesus Monkey, Gorilla, Chimpanzee, White-tufted-ear marmoset, Crab-eating macaque, African elephant, Chinese hamster, Naked mole rat and Northern white-cheeked gibbon.				
<b>ISOTYPE</b>	IgG				
<b>AMOUNT</b>	0.1 ml at 0.2 mg/ml				
<b>STORAGE/SHELF LIFE</b>	2 - 8° C / 1 year from date of receipt				
<b>PHYSICAL STATE</b>	Liquid				
<b>BUFFER</b>	Tris-buffered Saline with 0.1% BSA containing 0.09% Sodium Azide				
<b>ORIGIN</b>	USA				
<b>PRODUCTION PROCEDURES</b>	<p>Antibody was affinity purified using an epitope specific to DDX47 immobilized on solid support.</p> <p>The epitope recognized by A302-977A maps to a region between residue 405 and 455 of human DEAD (Asp-Glu-Ala-Asp) Box Polypeptide 47 using the numbering given in entry NP_057439.2 (GeneID 51202).</p> <p>Antibody concentration was determined by extinction coefficient: absorbance at 280 nm of 1.4 equals 1.0 mg of IgG.</p>				
<b>APPLICATIONS</b>	<p>Centrifuge tube to remove product from lid. Optimal working dilutions should be determined experimentally by the investigator. Prepare working dilution immediately before use.</p> <table><tr><td>Western Blot</td><td>1:2,000 to 1:10,000</td></tr><tr><td>Immunoprecipitation</td><td>2 to 5 µg/mg lysate</td></tr></table>	Western Blot	1:2,000 to 1:10,000	Immunoprecipitation	2 to 5 µg/mg lysate
Western Blot	1:2,000 to 1:10,000				
Immunoprecipitation	2 to 5 µg/mg lysate				
<b>APPLICATION NOTES</b>	Validation by IP/Western Blot was performed using a 4-20% SDS-PAGE gel and ReliaBLOT® Reagents (Cat. No. WB120).				
<b>ADDITIONAL INFO</b>	<p><a href="http://www.bethyl.com/product/A302-977A">http://www.bethyl.com/product/A302-977A</a></p> <p>Use the link above to view SDS, a current list of citations, and other product specific information.</p>				



**Detection of Human DDX47 by Western Blot and Immunoprecipitation.** *Samples:* Whole cell lysate from HeLa (5, 15 and 50  $\mu$ g for WB; 1 mg for IP, 20% of IP loaded) and 293T (T; 50  $\mu$ g) cells. *Antibodies:* Affinity purified rabbit anti-DDX47 antibody A302-977A used for WB at 0.04  $\mu$ g/ml (A) and 0.4  $\mu$ g/ml (B) and used for IP at 3  $\mu$ g/mg lysate. DDX47 was also immunoprecipitated by rabbit anti-DDX47 antibody A302-976A, which recognizes an upstream epitope. *Detection:* Chemiluminescence with exposure times of 3 minutes (A) and 10 seconds (B).