

HEXIM1 Antibody

Rabbit Polyclonal

Antigen Affinity Purified Protein ID NP_006451.1

Catalog No. A303-112A-T GenelD 10614

Lot No. A303-112A-T-1

APPLICATIONS	WB, IP, IHC
SPECIES REACTIVITY	Human, Mouse
PRESUMED REACTIVITY	Based on 100% sequence identity, this antibody is predicted to react with Rat and Bovine
AMOUNT	10 µl
CONCENTRATION	200 µg/ml
STORAGE/SHELF LIFE	2 – 8°C / 1 year from date of receipt
PHYSICAL STATE	Liquid
BUFFER	Tris-buffered Saline containing 0.1% BSA and 0.09% Sodium Azide
ISOTYPE	IgG
ORIGIN	USA
PRODUCTION PROCEDURES	Antibody was affinity purified using an epitope specific to HEXIM1 immobilized on solid support.

The epitope recognized by A303-112A-T maps to a region between residue 175 and 225 of human Hexamethylene Bis-Acetamide Inducible 1 using the numbering given in entry NP_006451.1 (GenelD 10614).

APPLICATIONS Centrifuge tube to remove product from lid. Optimal working dilutions should be determined experimentally by the investigator. Prepare working dilution immediately before use.

Western Blot 1:2,000 – 1:10,000

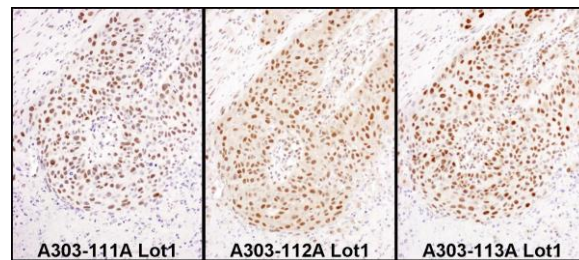
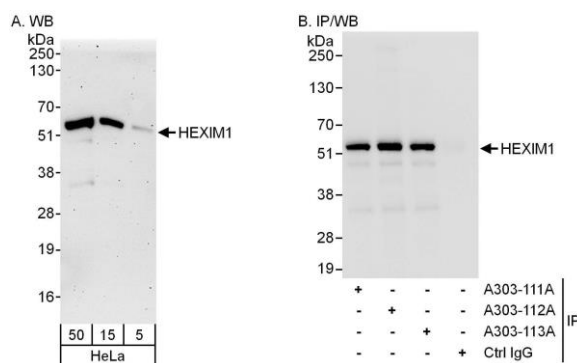
Immunoprecipitation 2 – 10 µg/mg lysate

Immunohistochemistry 1:200 – 1:1,000. Epitope retrieval with citrate buffer pH 6.0 is recommended for FFPE tissue sections.

ADDITIONAL INFO <https://www.bethyl.com/product/A303-112A-T>

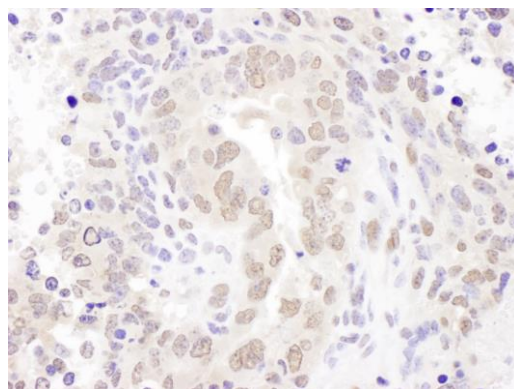
Use the link above to view SDS, a current list of citations, and other product specific information. IP-western blot protocol: https://www.bethyl.com/content/protocol_IP_WB

This document certifies that this product has met all of the quality control standards defined by Bethyl Laboratories, Inc.
Michael Spencer, PhD Date: June 6, 2022



Detection of human HEXIM1 by western blot and immunoprecipitation. *Samples:* Whole cell lysate (5, 15 and 50 µg for WB; 1 mg for IP, 20% of IP loaded) from HeLa cells. *Antibodies:* Affinity purified rabbit anti-HEXIM1 antibody A303-112A used for WB at 0.04 µg/ml (A) and 1 µg/ml (B) and used for IP at 6 µg/mg lysate. HEXIM1 was also immunoprecipitated by rabbit anti-HEXIM1 antibodies A303-111A and A303-113A, which recognize other epitopes. *Detection:* Chemiluminescence with exposure times of 3 minutes (A) and 3 seconds (B).

Detection of human HEXIM1 by immunohistochemistry. *Samples:* FFPE serial sections of human lung cancer. *Antibody:* Affinity purified rabbit anti-HEXIM1 (Cat. No. A303-111A Lot1, left image, A303-112A Lot1, middle image and Cat. No. A303-113A Lot1, right image) used at a dilution of 1:200 (1 µg/ml) (A303-111A-1) or 1:1,000 (1 µg/ml) (A303-112A-1 and A303-113A-1). *Detection:* DAB. *Counterstain:* hematoxylin (blue).



Detection of mouse HEXIM1 by immunohistochemistry. *Sample:* FFPE section of mouse teratoma. *Antibody:* Affinity purified rabbit anti-HEXIM1 (Cat. No. A303-112A Lot1) used at a dilution of 1:200 (1 µg/ml). *Detection:* DAB