

# NF110 Antibody

Rabbit Polyclonal

Antigen Affinity Purified

Protein ID NP\_036350.2

Catalog No. A303-122A-T

GeneID 3609

Lot No. A303-122A-T-2



<b>APPLICATIONS</b>	WB, IP, IHC
<b>SPECIES REACTIVITY</b>	Human
<b>AMOUNT</b>	20 µl (2 blots)
<b>CONCENTRATION</b>	400 µg/ml
<b>STORAGE/SHELF LIFE</b>	2 - 8° C / 1 year from date of receipt
<b>PHYSICAL STATE</b>	Liquid
<b>BUFFER</b>	Tris-buffered Saline containing 0.1% BSA and 0.09% Sodium Azide
<b>ISOTYPE</b>	IgG
<b>ORIGIN</b>	USA
<b>PRODUCTION PROCEDURES</b>	Antibody was affinity purified using an epitope specific to NF110 immobilized on solid support.

The epitope recognized by A303-122A-T maps to a region between residue 456 and 506 of human Nuclear Factor of Activated T-cells 110 kDa using the numbering given in entry NP\_036350.2 (GeneID 3609).

**APPLICATIONS** Centrifuge tube to remove product from lid. Optimal working dilutions should be determined experimentally by the investigator. Prepare working dilution immediately before use.

Western Blot 1:1000

Immunoprecipitation The antibody contained within A303-122A-T has been qualified for use in immunoprecipitation; however, we recommend using the alternative formulation of this antibody found as product A303-122A.

Immunohistochemistry 1:200 - 1:800. Epitope retrieval with citrate buffer pH 6.0 is recommended for FFPE tissue sections.

**APPLICATION NOTES** Western blot of immunoprecipitates performed using Normal Pig Serum (Cat. No. S100-020), Goat anti-Rabbit Light Chain HRP Conjugate (Cat. No. A120-113P) and 4-8% SDS-PAGE (link to IP-western blot protocol in Additional Info section below).

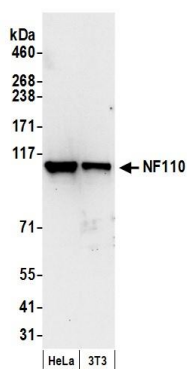
Western blot of lysates performed using standard western blot reagents and 4-8% SDS-PAGE.

**ADDITIONAL INFO** <https://www.bethyl.com/product/A303-122A-T>

Use the link above to view SDS, a current list of citations, and other product specific information.

IP-western blot protocol: [https://www.bethyl.com/content/protocol\\_IP\\_WB](https://www.bethyl.com/content/protocol_IP_WB)

This document certifies that this product has met all of the quality control standards defined by Bethyl Laboratories, Inc.  
Eric McIntush, PhD | Chief Scientific Officer Date: June 21, 2019

**Detection of human and mouse NF110 by western blot.**

*Samples:* Whole cell lysate (50  $\mu$ g) from HeLa and mouse NIH 3T3 cells prepared using NETN lysis buffer. *Antibody:* Affinity purified rabbit anti-NF110 antibody A303-122A-T (lot A303-122A-T-2) used for WB at 1:1000. *Detection:* Chemiluminescence with an exposure time of 10 seconds.