

NF45 Antibody

Rabbit Polyclonal

Antigen Affinity Purified Protein ID NP_004506.2

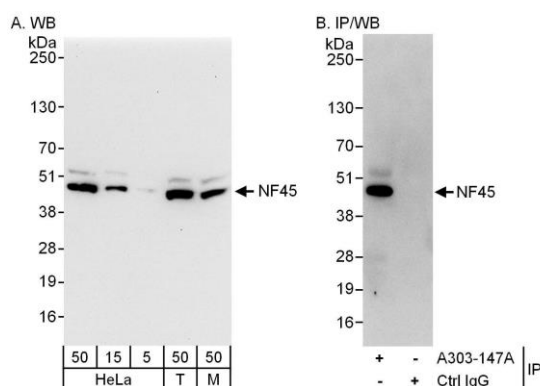
Catalog No. A303-147A GeneID 3608

Lot No. A303-147A-1

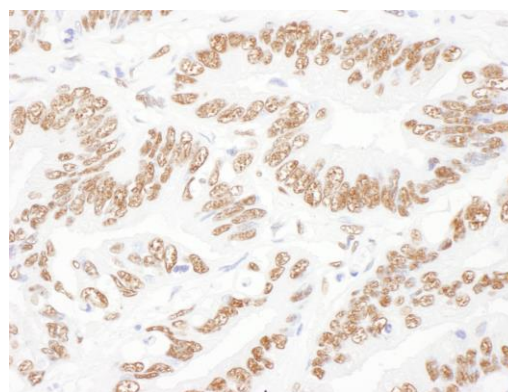


APPLICATIONS	WB, IP, IHC
SPECIES REACTIVITY	Human, Mouse
PRESUMED REACTIVITY	Based on 100% sequence identity, this antibody is predicted to react with Rat, <i>X. tropicalis</i> and Orangutan
AMOUNT	100 µl
CONCENTRATION	1000 µg/ml
STORAGE/SHELF LIFE	2 - 8° C / 1 year from date of receipt
PHYSICAL STATE	Liquid
BUFFER	Tris-citrate/phosphate buffer, pH 7 to 8 containing 0.09% Sodium Azide
ISOTYPE	IgG
ORIGIN	USA
PRODUCTION PROCEDURES	<p>Antibody was affinity purified using an epitope specific to NF45 immobilized on solid support.</p> <p>The epitope recognized by A303-147A maps to a region between residue 340 and 390 of human Nuclear Factor of Activated T-cells 45 kDa using the numbering given in entry NP_004506.2 (GeneID 3608).</p> <p>Antibody concentration was determined by extinction coefficient: absorbance at 280 nm of 1.4 equals 1.0 mg of IgG.</p>
APPLICATIONS	<p>Centrifuge tube to remove product from lid. Optimal working dilutions should be determined experimentally by the investigator. Prepare working dilution immediately before use.</p> <p>Western Blot 1:2,000 - 1:10,000</p> <p>Immunoprecipitation 2 - 10 µg/mg lysate</p> <p>Immunohistochemistry 1:1,000 - 1:5,000. Epitope retrieval with citrate buffer pH 6.0 is recommended for FFPE tissue sections.</p>
APPLICATION NOTES	<p>Western blot of immunoprecipitates performed using Normal Pig Serum (Cat. No. S100-020), Goat anti-Rabbit Light Chain HRP Conjugate (Cat. No. A120-113P) and 4-20% SDS-PAGE (link to IP-western blot protocol in Additional Info section below).</p> <p>Western blot of lysates performed using standard western blot reagents and 4-20% SDS-PAGE.</p>
IHC HUMAN CONTROLS	Breast Carcinoma, Colon Carcinoma, Ovarian Carcinoma, Placenta, Prostate Carcinoma
IHC MOUSE CONTROLS	Renal Cell Carcinoma
ADDITIONAL INFO	<p>https://www.bethyl.com/product/A303-147A</p> <p>Use the link above to view SDS, a current list of citations, and other product specific information.</p> <p>IP-western blot protocol: https://www.bethyl.com/content/protocol_IP_WB</p>

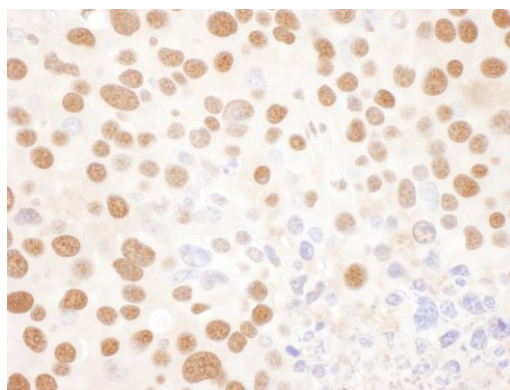
This document certifies that this product has met all of the quality control standards defined by Bethyl Laboratories, Inc.
Eric McIntush, PhD | Chief Scientific Officer Date: June 21, 2019



Detection of human and mouse NF45 by western blot (h & m) and immunoprecipitation (h). *Samples:* Whole cell lysate from HeLa (5, 15 and 50 µg for WB; 1 mg for IP, 20% of IP loaded), HEK293T (T; 50 µg) and mouse NIH 3T3 (M; 50 µg) cells. *Antibodies:* Affinity purified rabbit anti-NF45 antibody A303-147A used for WB at 0.1 µg/ml (A) and 1 µg/ml (B) and used for IP at 6 µg/mg lysate. *Detection:* Chemiluminescence with exposure times of 10 seconds (A and B).



Detection of human NF45 by immunohistochemistry. *Sample:* FFPE section of human lung cancer. *Antibody:* Affinity purified rabbit anti- NF45 (Cat. No. A303-147A Lot1) used at a dilution of 1:5,000 (0.2 µg/ml). *Detection:* DAB. *Counterstain:* hematoxylin (blue).



Detection of mouse NF45 by immunohistochemistry. *Sample:* FFPE section of mouse renal cell carcinoma. *Antibody:* Affinity purified rabbit anti- NF45 (Cat. No. A303-147A Lot1) used at a dilution of 1:1,000 (1 µg/ml). *Detection:* DAB