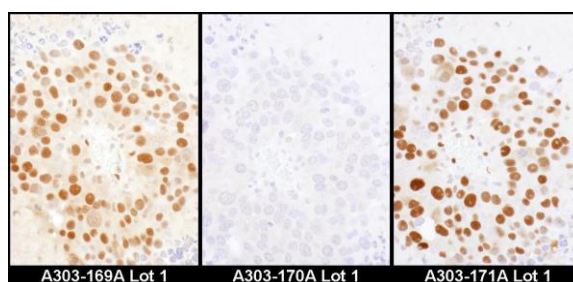


Detection of human HDGF by western blot of immunoprecipitates. *Samples:* Whole cell lysate (1 mg for IP, 20% of IP loaded) from HeLa cells. *Antibodies:* Affinity purified rabbit anti-HDGF antibody A303-169A used for IP at 6 µg/mg lysate. HDGF was also immunoprecipitated by rabbit anti-HDGF antibodies A303-170A and A303-171A, which recognize downstream epitopes. For blotting immunoprecipitated HDGF, A303-170A was used at 1 µg/ml. *Detection:* Chemiluminescence with an exposure time of 1 second.

Detection of human HDGF by immunohistochemistry. *Samples:* FFPE serial sections of human breast carcinoma. *Antibody:* Affinity purified rabbit anti-HDGF (Cat. No. A303-169A Lot1, left image, A303-170A Lot1, middle image and Cat. No. A303-171A Lot1, right image) used at a dilution of 1:1,000 (1 µg/ml) or 1:200 (1 µg/ml). *Detection:* DAB. *Counterstain:* Hematoxylin (blue).



Detection of mouse HDGF by immunohistochemistry. *Samples:* FFPE serial sections of mouse renal cell carcinoma. *Antibody:* Affinity purified rabbit anti-HDGF (Cat. No. A303-169A Lot1, left image, A303-170A Lot1, middle image and Cat. No. A303-171A Lot1, right image) used at a dilution of 1:1,000 (1 µg/ml) or 1:200 (1 µg/ml). *Detection:* DAB