

EGR1 Antibody

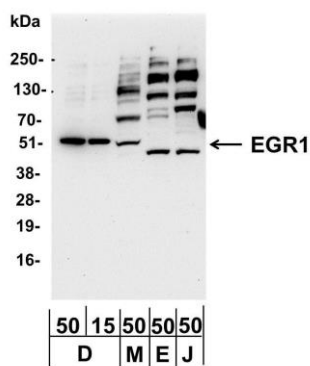
Rabbit Polyclonal

Antigen Affinity Purified Protein ID NP_031939.1
Catalog No. A303-390A-M GeneID 13653
Lot No. A303-390A-M-1



APPLICATIONS	WB, IP
SPECIES REACTIVITY	Human, Mouse
PRESUMED REACTIVITY	Based on 100% sequence identity, this antibody is predicted to react with Bovine
AMOUNT	100 µl (10 blots)
CONCENTRATION	400 µg/ml
STORAGE/SHELF LIFE	2 - 8° C / 1 year from date of receipt
PHYSICAL STATE	Liquid
BUFFER	Tris-buffered Saline containing 0.1% BSA and 0.09% Sodium Azide
ISOTYPE	IgG
ORIGIN	USA
PRODUCTION PROCEDURES	Antibody was affinity purified using an epitope specific to EGR1 immobilized on solid support. The epitope recognized by A303-390A-M maps to a region between residue 1 and 50 of mouse Early Growth Response Protein 1 using the numbering given in entry NP_031939.1 (GeneID 13653).
APPLICATIONS	Centrifuge tube to remove product from lid. Optimal working dilutions should be determined experimentally by the investigator. Prepare working dilution immediately before use. Western Blot 1:1000 Immunoprecipitation The antibody contained within A303-390A-M has been qualified for use in immunoprecipitation; however, we recommend using the alternative formulation of this antibody found as product A303-390A.
APPLICATION NOTES	Western blot of immunoprecipitates performed using Normal Pig Serum (Cat. No. S100-020), Goat anti-Rabbit Light Chain HRP Conjugate (Cat. No. A120-113P) and 4-20% SDS-PAGE (link to IP-western blot protocol in Additional Info section below). Western blot of lysates performed using standard western blot reagents and 4-20% SDS-PAGE.
ADDITIONAL INFO	https://www.bethyl.com/product/A303-390A-M Use the link above to view SDS, a current list of citations, and other product specific information. IP-western blot protocol: https://www.bethyl.com/content/protocol_IP_WB

This document certifies that this product has met all of the quality control standards defined by Bethyl Laboratories, Inc.
Eric McIntush, PhD | Chief Scientific Officer Date: June 21, 2019

**Detection of human and mouse EGR1 by western blot.**

Samples: Whole cell lysate from mouse bone marrow dendritic (D; 15 and 50 µg), NIH 3T3 (M; 50 µg), human erythroleukemia (E; 50 µg), and Jurkat (J; 50 µg) cells.

Antibody: Affinity purified rabbit anti-EGR1 antibody A303-390A-M used at 1:1000. *Detection:*

Chemiluminescence with an exposure time of 30 seconds.