

# GPATCH4 Antibody

Rabbit Polyclonal

Antigen Affinity Purified

Protein ID EAW52937.1

Catalog No. A303-405A

GeneID 54865

Lot No. A303-405A-1



**APPLICATIONS** WB

**SPECIES REACTIVITY** Human

**AMOUNT** 100 µl

**CONCENTRATION** 200 µg/ml

**STORAGE/SHELF LIFE** 2 - 8° C / 1 year from date of receipt

**PHYSICAL STATE** Liquid

**BUFFER** Tris-buffered Saline containing 0.1% BSA and 0.09% Sodium Azide

**ISOTYPE** IgG

**ORIGIN** USA

**PRODUCTION PROCEDURES** Antibody was affinity purified using an epitope specific to GPATCH4 immobilized on solid support.

The epitope recognized by A303-405A maps to a region between residue 396 and 446 of human G Patch Domain Containing 4 using the numbering given in entry EAW52937.1 (GeneID 54865).

Antibody concentration was determined by extinction coefficient: absorbance at 280 nm of 1.4 equals 1.0 mg of IgG.

**APPLICATIONS** Centrifuge tube to remove product from lid. Optimal working dilutions should be determined experimentally by the investigator. Prepare working dilution immediately before use.

Western Blot 1:2,000 - 1:10,000

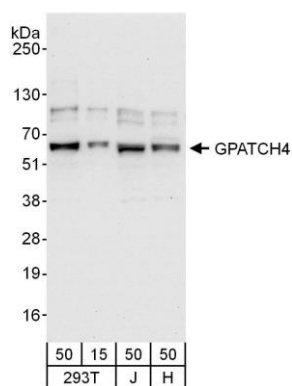
Immunoprecipitation Not recommended

**APPLICATION NOTES** Western blot of lysates performed using standard western blot reagents and 4-12% SDS-PAGE.

**ADDITIONAL INFO** <https://www.bethyl.com/product/A303-405A>

Use the link above to view SDS, a current list of citations, and other product specific information.

This document certifies that this product has met all of the quality control standards defined by Bethyl Laboratories, Inc.  
Eric McIntush, PhD | Chief Scientific Officer Date: June 21, 2019



**Detection of human GPATCH4 by western blot.** *Samples:* Whole cell lysate from HEK293T (15 and 50 µg), Jurkat (J; 50 µg) and HeLa (H; 50 µg) cells. *Antibody:* Affinity purified rabbit anti-GPATCH4 antibody A303-405A used for WB at 0.04 µg/ml. *Detection:* Chemiluminescence with an exposure time of 10 seconds.