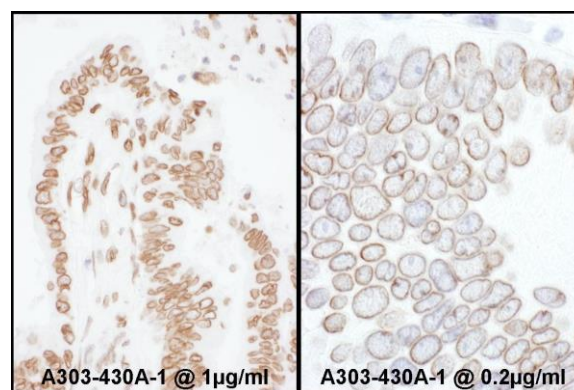
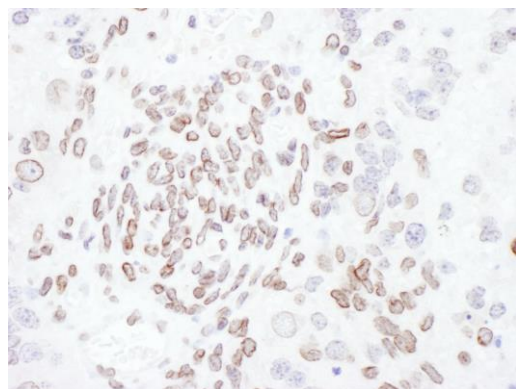


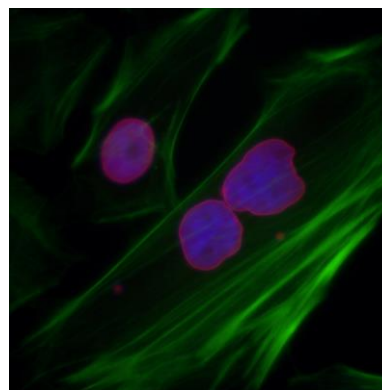
**Detection of human Lamin-A and Lamin-C by western blot and immunoprecipitation.** *Samples:* Whole cell lysate (15 and 50  $\mu$ g for WB; 1 mg for IP, 20% of IP loaded) from HeLa cells. *Antibodies:* Affinity purified rabbit anti-Lamin-A/C antibody A303-430A used for WB at 0.04  $\mu$ g/ml (A) and 0.4  $\mu$ g/ml (B) and used for IP at 6  $\mu$ g/mg lysate. Lamin-A was also immunoprecipitated by rabbit anti-Lamin-A antibody A303-433A, which recognizes a downstream epitope. *Detection:* Chemiluminescence with exposure times of 1 second (A and B).



**Detection of human Lamin-A /C by immunohistochemistry.** *Samples:* FFPE sections of human colon carcinoma. *Antibody:* Affinity purified rabbit anti-Lamin-A/C (Cat. No. A303-430A Lot1) used at a dilution of 1:200 (1  $\mu$ g/ml) (left) and 1:1,000 (0.2  $\mu$ g/ml) (right). *Detection:* DAB



**Detection of mouse Lamin-A /C by immunohistochemistry.** *Sample:* FFPE section of mouse teratoma. *Antibody:* Affinity purified rabbit anti-Lamin-A/C (Cat. No. A303-430A Lot1) used at a dilution of 1:200 (1  $\mu$ g/ml). *Detection:* DAB



**Detection of human Lamin-A /C by immunocytochemistry.** *Samples:* Formaldehyde-fixed asynchronous HeLa cells. *Antibody:* Affinity purified rabbit anti-Lamin-A/C (Cat. No. A303-430A Lot1) used at a dilution of 1:200 (1  $\mu$ g/ml). *Detection:* Red-fluorescent goat anti-rabbit IgG-heavy and light chain cross-adsorbed Antibody DyLight® 594 Conjugated used at a dilution of 1:100.