

# Lamin-A/C Antibody

Rabbit Polyclonal

Antigen Affinity Purified Protein ID NP\_733821.1

Catalog No. A303-430A-M GeneID 4000

Lot No. A303-430A-M-1



<b>APPLICATIONS</b>	WB, IP, IHC, ICC-IF
<b>SPECIES REACTIVITY</b>	Human, Mouse
<b>PRESUMED REACTIVITY</b>	Based on 100% sequence identity, this antibody is predicted to react with Pig
<b>AMOUNT</b>	100 µl (10 blots)
<b>CONCENTRATION</b>	40 µg/ml
<b>STORAGE/SHELF LIFE</b>	2 - 8° C / 1 year from date of receipt
<b>PHYSICAL STATE</b>	Liquid
<b>BUFFER</b>	Tris-buffered Saline containing 0.1% BSA and 0.09% Sodium Azide
<b>ISOTYPE</b>	IgG
<b>ORIGIN</b>	USA
<b>PRODUCTION PROCEDURES</b>	Antibody was affinity purified using an epitope specific to Lamin-A/C immobilized on solid support.

The epitope recognized by A303-430A-M maps to a region between residue 1 and 50 of human Lamin A/Lamin C using the numbering given in entry NP\_733821.1 (GeneID 4000).

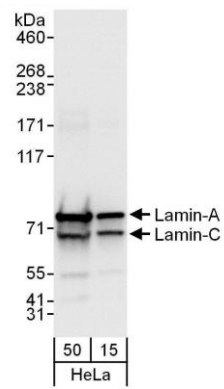
<b>APPLICATIONS</b>	Centrifuge tube to remove product from lid. Optimal working dilutions should be determined experimentally by the investigator. Prepare working dilution immediately before use.
Western Blot	1:1000
Immunoprecipitation	The antibody contained within A303-430A-M has been qualified for use in immunoprecipitation; however, we recommend using the alternative formulation of this antibody found as product A303-430A.
Immunohistochemistry	1:40 - 1:200. Epitope retrieval with citrate buffer pH 6.0 is recommended for FFPE tissue sections.
Immunofluorescence (ICC)	1:20 - 1:100. Formaldehyde fixation is recommended. Permeabilization with Triton-X 100 is recommended for formaldehyde-fixed cells.

**APPLICATION NOTES** Western blot of immunoprecipitates performed using Normal Pig Serum (Cat. No. S100-020), Goat anti-Rabbit Light Chain HRP Conjugate (Cat. No. A120-113P) and 4-8% SDS-PAGE (link to IP-western blot protocol in Additional Info section below).

Western blot of lysates performed using standard western blot reagents and 4-8% SDS-PAGE.

**ADDITIONAL INFO** <https://www.bethyl.com/product/A303-430A-M>  
Use the link above to view SDS, a current list of citations, and other product specific information.  
IP-western blot protocol: [https://www.bethyl.com/content/protocol\\_IP\\_WB](https://www.bethyl.com/content/protocol_IP_WB)

This document certifies that this product has met all of the quality control standards defined by Bethyl Laboratories, Inc.  
Eric McIntush, PhD | Chief Scientific Officer Date: June 21, 2019



**Detection of human Lamin-A and Lamin-C by western blot.** *Samples:* Whole cell lysate (15 and 50 µg) from HeLa cells. *Antibody:* Affinity purified rabbit anti-Lamin-A/C antibody A303-430A-M used at 1:1000. *Detection:* Chemiluminescence with an exposure time of 1 second.