

CCT5 Antibody

Rabbit Polyclonal

Antigen Affinity Purified Protein ID NP_036205.1

Catalog No. A303-480A-T GenelD 22948

Lot No. A303-480A-T-1

APPLICATIONS	WB, IP, IHC
SPECIES REACTIVITY	Human, Mouse
PRESUMED REACTIVITY	Based on 100% sequence identity, this antibody is predicted to react with Rat and Orangutan
AMOUNT	10 µl
CONCENTRATION	200 µg/ml
STORAGE/SHELF LIFE	2 – 8°C / 1 year from date of receipt
PHYSICAL STATE	Liquid
BUFFER	Tris-buffered Saline containing 0.1% BSA and 0.09% Sodium Azide
ISOTYPE	IgG
ORIGIN	USA
PRODUCTION PROCEDURES	Antibody was affinity purified using an epitope specific to CCT5 immobilized on solid support.

The epitope recognized by A303-480A-T maps to a region between residue 100 and 150 of human Chaperonin containing TCP1, subunit 5 using the numbering given in entry NP_036205.1 (GenelD 22948).

APPLICATIONS Centrifuge tube to remove product from lid. Optimal working dilutions should be determined experimentally by the investigator. Prepare working dilution immediately before use.

Western Blot 1:2,000 – 1:10,000

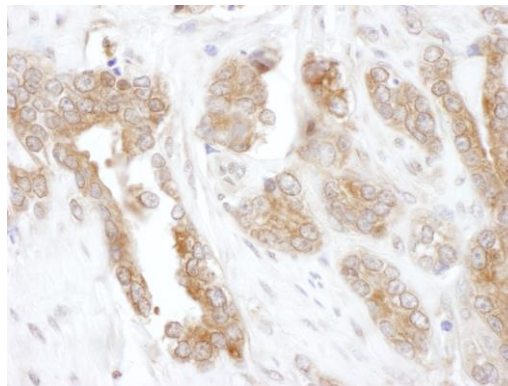
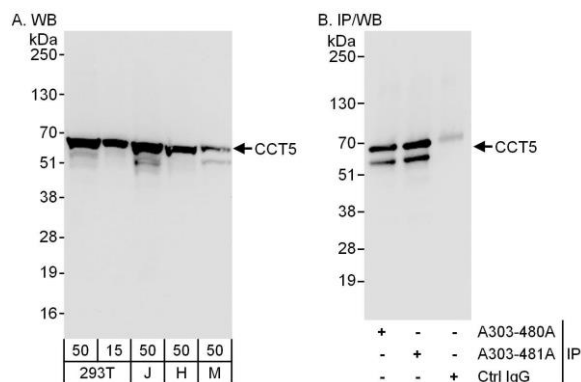
Immunoprecipitation 2 – 10 µg/mg lysate

Immunohistochemistry 1:100 – 1:500. Epitope retrieval with citrate buffer pH 6.0 is recommended for FFPE tissue sections.

ADDITIONAL INFO <https://www.bethyl.com/product/A303-480A-T>

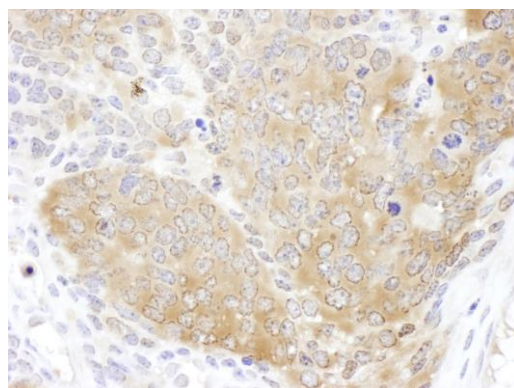
Use the link above to view SDS, a current list of citations, and other product specific information. IP-western blot protocol: https://www.bethyl.com/content/protocol_IP_WB

This document certifies that this product has met all of the quality control standards defined by Bethyl Laboratories, Inc.
Michael Spencer, PhD Date: June 6, 2022



Detection of human and mouse CCT5 by western blot (h and m) and immunoprecipitation (h). *Samples:* Whole cell lysate from HEK293T (15 and 50 μ g for WB; 1 mg for IP, 20% of IP loaded), Jurkat (J; 50 μ g), HeLa (H; 50 μ g) and mouse NIH 3T3 (M; 50 μ g) cells. *Antibodies:* Affinity purified rabbit anti-CCT5 antibody A303-480A used for WB at 0.04 μ g/ml (A) and 0.4 μ g/ml (B) and used for IP at 6 μ g/mg lysate. CCT5 was also immunoprecipitated by rabbit anti-CCT5 antibody A303-481A, which recognizes a downstream epitope. *Detection:* Chemiluminescence with exposure times of 3 seconds (A) and 1 second (B).

Detection of human CCT5 by immunohistochemistry. *Sample:* FFPE section of human prostate carcinoma. *Antibody:* Affinity purified rabbit anti-CCT5 (Cat. No. A303-480A Lot1) used at a dilution of 1:200 (1 μ g/ml). *Detection:* DAB. *Counterstain:* hematoxylin (blue).



Detection of mouse CCT5 by immunohistochemistry. *Sample:* FFPE section of mouse teratoma. *Antibody:* Affinity purified rabbit anti-CCT5 (Cat. No. A303-480A Lot1) used at a dilution of 1:200 (1 μ g/ml). *Detection:* DAB