

USF2 Antibody

Rabbit Polyclonal

Antigen Affinity Purified

Protein ID NP_003358.1

Catalog No. A303-540A-M

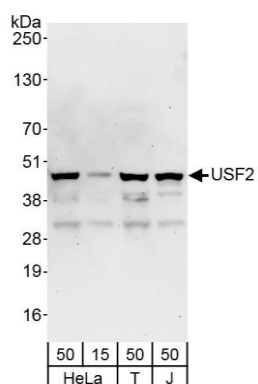
GeneID 7392

Lot No. A303-540A-M-1



APPLICATIONS	WB, IP, IHC
SPECIES REACTIVITY	Human, Mouse
PRESUMED REACTIVITY	Based on 100% sequence identity, this antibody is predicted to react with Rat
AMOUNT	100 µl (10 blots)
CONCENTRATION	100 µg/ml
STORAGE/SHELF LIFE	2 - 8° C / 1 year from date of receipt
PHYSICAL STATE	Liquid
BUFFER	Tris-buffered Saline containing 0.1% BSA and 0.09% Sodium Azide
ISOTYPE	IgG
ORIGIN	USA
PRODUCTION PROCEDURES	Antibody was affinity purified using an epitope specific to USF2 immobilized on solid support. The epitope recognized by A303-540A-M maps to a region between residue 1 and 50 of human Upstream Transcription Factor 2 using the numbering given in entry NP_003358.1 (GeneID 7392).
APPLICATIONS	Centrifuge tube to remove product from lid. Optimal working dilutions should be determined experimentally by the investigator. Prepare working dilution immediately before use. Western Blot 1:1000 Immunoprecipitation The antibody contained within A303-540A-M has been qualified for use in immunoprecipitation; however, we recommend using the alternative formulation of this antibody found as product A303-540A. Immunohistochemistry 1:100 - 1:500. Epitope retrieval with citrate buffer pH 6.0 is recommended for FFPE tissue sections.
APPLICATION NOTES	Western blot of immunoprecipitates performed using Normal Pig Serum (Cat. No. S100-020), Goat anti-Rabbit Light Chain HRP Conjugate (Cat. No. A120-113P) and 4-20% SDS-PAGE (link to IP-western blot protocol in Additional Info section below).
ADDITIONAL INFO	Western blot of lysates performed using standard western blot reagents and 4-20% SDS-PAGE. https://www.bethyl.com/product/A303-540A-M Use the link above to view SDS, a current list of citations, and other product specific information. IP-western blot protocol https://www.bethyl.com/content/protocol_IP_WB

This document certifies that this product has met all of the quality control standards defined by Bethyl Laboratories, Inc.
Eric McIntush, PhD | Chief Scientific Officer Date: October 23, 2019



Detection of human USF2 by western blot. *Samples:* Whole cell lysate from HeLa (15 and 50 µg), HEK293T (T; 50 µg), and Jurkat (J; 50 µg) cells. *Antibody:* Affinity purified rabbit anti-USF2 antibody A303-540A-M (lot A303-540A-M-1) used at 1:1000. *Detection:* Chemiluminescence with an exposure time of 3 minutes.