

# RNF31 Antibody

Rabbit Polyclonal

Antigen Affinity Purified

Protein ID NP\_060469.4

Catalog No. A303-560A-T

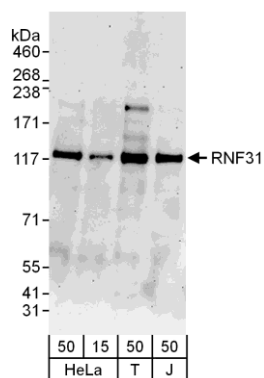
Gene ID 55072

Lot No. A303-560A-T-1



<b>APPLICATIONS</b>	WB
<b>REACTIVITY TESTED</b>	Human
<b>PRESUMED REACTIVITY</b>	Based on 100% sequence identity, this antibody is predicted to react with Rabbit, Orangutan, Rhesus Monkey, Gorilla, Chimpanzee, White-tufted-ear marmoset, Crab-eating macaque, African elephant, Small-eared galago and Northern white-cheeked gibbon.
<b>ISOTYPE</b>	IgG
<b>AMOUNT</b>	20 µl (2 blots)
<b>STORAGE/SHELF LIFE</b>	2 - 8° C / 1 year from date of receipt
<b>PHYSICAL STATE</b>	Liquid
<b>BUFFER</b>	Tris-buffered Saline with 0.1% BSA containing 0.09% Sodium Azide
<b>ORIGIN</b>	USA
<b>PRODUCTION PROCEDURES</b>	Antibody was affinity purified using an epitope specific to RNF31 immobilized on solid support.  The epitope recognized by A303-560A-T maps to a region between residue 1022 and 1072 of human Ring Finger Protein 31 using the numbering given in entry NP_060469.4 (GeneID 55072).
<b>APPLICATIONS</b>	Centrifuge tube to remove product from lid. Optimal working dilutions should be determined experimentally by the investigator. Prepare working dilution immediately before use.  Western Blot                      1:1000 Immunoprecipitation            Not Recommended
<b>APPLICATION NOTES</b>	Validation by IP/Western Blot was performed using a 4-8% SDS-PAGE gel and ReliaBLOT® Reagents (Cat. No. WB120).
<b>ADDITIONAL INFO</b>	<a href="http://www.bethyl.com/product/A303-560A-T">http://www.bethyl.com/product/A303-560A-T</a>  Use the link above to view SDS, a current list of citations, and other product specific information.

## RNF31 Antibody: A303-560A-T



**Detection of Human RNF31 by Western Blot.** *Samples:* Samples: Whole cell lysate from HeLa (15 and 50 µg), 293T (T; 50 µg) and Jurkat (J; 50 µg) cells. *Antibody:* Affinity purified rabbit anti-RNF31 antibody A303-560A-T used at 1:1000. *Detection:* Chemiluminescence with an exposure time of 3 minutes.