

TRPS1 Antibody

Rabbit Polyclonal

Antigen Affinity Purified Protein ID AAG21134.1

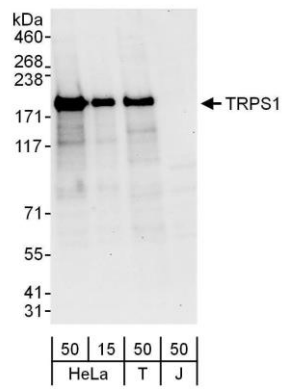
Catalog No. A303-563A-M GeneID 7227

Lot No. A303-563A-M-1



APPLICATIONS	WB, IP, IHC
SPECIES REACTIVITY	Human
AMOUNT	100 µl (10 blots)
CONCENTRATION	40 µg/ml
STORAGE/SHELF LIFE	2 - 8° C / 1 year from date of receipt
PHYSICAL STATE	Liquid
BUFFER	Tris-buffered Saline containing 0.1% BSA and 0.09% Sodium Azide
ISOTYPE	IgG
ORIGIN	USA
PRODUCTION PROCEDURES	Antibody was affinity purified using an epitope specific to TRPS1 immobilized on solid support. The epitope recognized by A303-563A-M maps to a region between residue 1 and 50 of human Tricho-Rhino-Phalangeal Syndrome Type I using the numbering given in entry AAG21134.1 (GeneID 7227).
APPLICATIONS	Centrifuge tube to remove product from lid. Optimal working dilutions should be determined experimentally by the investigator. Prepare working dilution immediately before use. Western Blot 1:1000 Immunoprecipitation The antibody contained within A303-563A-M has been qualified for use in immunoprecipitation; however, we recommend using the alternative formulation of this antibody found as product A303-563A. Immunohistochemistry 1:20 - 1:100. Epitope retrieval with citrate buffer pH 6.0 is recommended for FFPE tissue sections.
APPLICATION NOTES	Western blot of immunoprecipitates performed using Normal Pig Serum (Cat. No. S100-020), Goat anti-Rabbit Light Chain HRP Conjugate (Cat. No. A120-113P) and 4-8% SDS-PAGE (link to IP-western blot protocol in Additional Info section below). Western blot of lysates performed using standard western blot reagents and 4-8% SDS-PAGE.
ADDITIONAL INFO	https://www.bethyl.com/product/A303-563A-M Use the link above to view SDS, a current list of citations, and other product specific information. IP-western blot protocol: https://www.bethyl.com/content/protocol_IP_WB

This document certifies that this product has met all of the quality control standards defined by Bethyl Laboratories, Inc.
Eric McIntush, PhD | Chief Scientific Officer Date: June 21, 2019



Detection of human TRPS1 by western blot. *Samples:* Whole cell lysate from HeLa (15 and 50 µg), HEK293T (T; 50 µg), and Jurkat (J; 50 µg) cells. *Antibody:* Affinity purified rabbit anti-TRPS1 antibody A303-563A-M used at 1:1000. *Detection:* Chemiluminescence with an exposure time of 30 seconds.