

CBFA2T3 Antibody

Rabbit Polyclonal

Antigen Affinity Purified

Protein ID NP_005178.4

Catalog No. A303-616A

GeneID 863

Lot No. A303-616A-1



APPLICATIONS	WB, IP
SPECIES REACTIVITY	Human
AMOUNT	100 µl
CONCENTRATION	1000 µg/ml
STORAGE/SHELF LIFE	2 - 8° C / 1 year from date of receipt
PHYSICAL STATE	Liquid
BUFFER	Tris-citrate/phosphate buffer, pH 7 to 8 containing 0.09% Sodium Azide
ISOTYPE	IgG
ORIGIN	USA
PRODUCTION PROCEDURES	Antibody was affinity purified using an epitope specific to CBFA2T3 immobilized on solid support.

The epitope recognized by A303-616A maps to a region between residue 603 and 653 of human Core-Binding Factor, Runt Domain, alpha subunit 2; translocated to, 3 using the numbering given in entry NP_005178.4 (GeneID 863).

Antibody concentration was determined by extinction coefficient: absorbance at 280 nm of 1.4 equals 1.0 mg of IgG.

APPLICATIONS Centrifuge tube to remove product from lid. Optimal working dilutions should be determined experimentally by the investigator. Prepare working dilution immediately before use.

Western Blot 1:2,000 - 1:10,000

Immunoprecipitation 2 - 10 µg/mg lysate

APPLICATION NOTES Western blot of immunoprecipitates performed using Normal Pig Serum (Cat. No. S100-020), Goat anti-Rabbit Light Chain HRP Conjugate (Cat. No. A120-113P) and 4-8% SDS-PAGE (link to IP-western blot protocol in Additional Info section below).

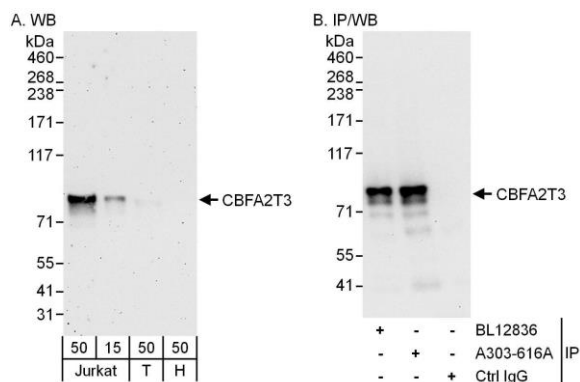
Western blot of lysates performed using standard western blot reagents and 4-8% SDS-PAGE.

ADDITIONAL INFO <https://www.bethyl.com/product/A303-616A>

Use the link above to view SDS, a current list of citations, and other product specific information.

IP-western blot protocol: https://www.bethyl.com/content/protocol_IP_WB

This document certifies that this product has met all of the quality control standards defined by Bethyl Laboratories, Inc.
Eric McIntush, PhD | Chief Scientific Officer Date: June 21, 2019



Detection of human CBFA2T3 by western blot and immunoprecipitation. *Samples:* Whole cell lysate from Jurkat (15 and 50 µg for WB; 1 mg for IP, 20% of IP loaded), HEK293T (T; 50 µg) and HeLa (H; 50 µg) cells. *Antibodies:* Affinity purified rabbit anti-CBFA2T3 antibody A303-616A used for WB at 0.1 µg/ml (A) and 1 µg/ml (B) and used for IP at 6 µg/mg lysate. CBFA2T3 was also immunoprecipitated by rabbit anti-CBFA2T3 antibody BL12836, which recognizes an upstream epitope. *Detection:* Chemiluminescence with exposure times of 3 minutes (A) and 10 seconds (B).