

MNT Antibody

Rabbit Polyclonal

Antigen Affinity Purified

Protein ID NP_064706.1

Catalog No. A303-627A-M

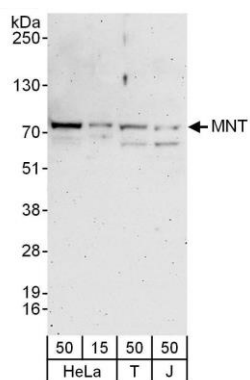
GeneID 4335

Lot No. A303-627A-M-1



APPLICATIONS	WB, IP
SPECIES REACTIVITY	Human
PRESUMED REACTIVITY	Based on 100% sequence identity, this antibody is predicted to react with Mouse and <i>X. laevis</i>
AMOUNT	100 µl (10 blots)
CONCENTRATION	500 µg/ml
STORAGE/SHELF LIFE	2 - 8° C / 1 year from date of receipt
PHYSICAL STATE	Liquid
BUFFER	Tris-buffered Saline containing 0.1% BSA and 0.09% Sodium Azide
ISOTYPE	IgG
ORIGIN	USA
PRODUCTION PROCEDURES	Antibody was affinity purified using an epitope specific to MNT immobilized on solid support. The epitope recognized by A303-627A-M maps to a region between residue 532 and 582 of human MAX Binding Protein using the numbering given in entry NP_064706.1 (GeneID 4335).
APPLICATIONS	Centrifuge tube to remove product from lid. Optimal working dilutions should be determined experimentally by the investigator. Prepare working dilution immediately before use. Western Blot 1:1000 Immunoprecipitation The antibody contained within A303-627A-M has been qualified for use in immunoprecipitation; however, we recommend using the alternative formulation of this antibody found as product A303-627A.
APPLICATION NOTES	Western blot of immunoprecipitates performed using Normal Pig Serum (Cat. No. S100-020), Goat anti-Rabbit Light Chain HRP Conjugate (Cat. No. A120-113P) and 4-20% SDS-PAGE (link to IP-western blot protocol in Additional Info section below). Western blot of lysates performed using standard western blot reagents and 4-20% SDS-PAGE.
ADDITIONAL INFO	https://www.bethyl.com/product/A303-627A-M Use the link above to view SDS, a current list of citations, and other product specific information. IP-western blot protocol: https://www.bethyl.com/content/protocol_IP_WB

This document certifies that this product has met all of the quality control standards defined by Bethyl Laboratories, Inc.
Eric McIntush, PhD | Chief Scientific Officer Date: June 21, 2019



Detection of human MNT by western blot. *Samples:* Whole cell lysate from HeLa (15 and 50 μ g), HEK293T (T; 50 μ g), and Jurkat (J; 50 μ g) cells. *Antibody:* Affinity purified rabbit anti-MNT antibody A303-627A-M used at 1:1000. *Detection:* Chemiluminescence with an exposure time of 3 minutes.