

# TFEB Antibody

Rabbit Polyclonal

Antigen Affinity Purified Protein ID NP\_009093.1

Catalog No. A303-673A-T GeneID 7942

Lot No. A303-673A-T-8

---

<b>APPLICATIONS</b>	WB, IP
<b>SPECIES REACTIVITY</b>	Human, Mouse
<b>AMOUNT</b>	10 µl
<b>CONCENTRATION</b>	1000 µg/ml
<b>STORAGE/SHELF LIFE</b>	2 – 8°C / 1 year from date of receipt
<b>PHYSICAL STATE</b>	Liquid
<b>BUFFER</b>	Tris-citrate/phosphate buffer, pH 7 to 8 containing 0.09% Sodium Azide
<b>ISOTYPE</b>	IgG
<b>ORIGIN</b>	USA
<b>PRODUCTION PROCEDURES</b>	Antibody was affinity purified using an epitope specific to TFEB immobilized on solid support.

The epitope recognized by A303-673A-T maps to a region between residue 426 and 476 of human Transcription Factor EB using the numbering given in entry NP\_009093.1 (GeneID 7942).

**APPLICATIONS** Centrifuge tube to remove product from lid. Optimal working dilutions should be determined experimentally by the investigator. Prepare working dilution immediately before use.

Western Blot 1:2,000 – 1:10,000

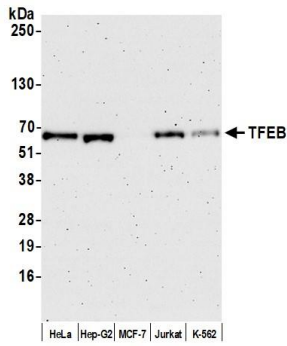
Immunoprecipitation 2 – 10 µg/mg lysate

**ADDITIONAL INFO** <https://www.bethyl.com/product/A303-673A-T>

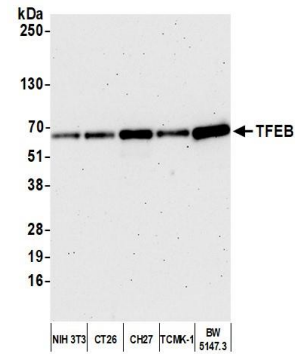
Use the link above to view SDS, a current list of citations, and other product specific information.

IP-western blot protocol: [https://www.bethyl.com/content/protocol\\_IP\\_WB](https://www.bethyl.com/content/protocol_IP_WB)

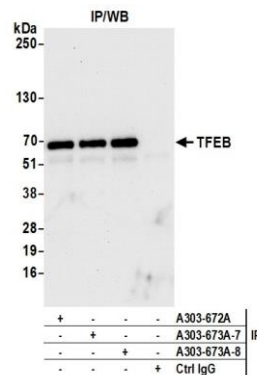
This document certifies that this product has met all of the quality control standards defined by Bethyl Laboratories, Inc.  
Michael Spencer, PhD Date: April 25, 2022



**Detection of human TFEB by western blot.** *Samples:* Whole cell lysate (10 µg) from HeLa, Hep-G2, MCF-7, Jurkat, and K-562 cells prepared using NETN lysis buffer. *Antibody:* Affinity purified rabbit anti-TFEB antibody (A303-673A lot 8) used for WB at 0.1 µg/ml. *Detection:* Chemiluminescence with an exposure time of 3 minutes.



**Detection of mouse TFEB by western blot.** *Samples:* Whole cell lysate (10 µg) from NIH 3T3, CT26, CH27, TCMK-1, and BW5147.3 cells prepared using NETN lysis buffer. *Antibody:* Affinity purified rabbit anti-TFEB antibody (A303-673A lot 8) used for WB at 0.1 µg/ml. *Detection:* Chemiluminescence with an exposure time of 75 seconds.



**Detection of human TFEB by western blot of immunoprecipitates.** *Samples:* Whole cell lysate (1.0 mg per IP reaction; 20% of IP loaded) from HeLa cells prepared using NETN lysis buffer. *Antibodies:* Affinity purified rabbit anti-TFEB antibody (A303-673A lot 8) used for IP at 6 µg per reaction. TFEB was also immunoprecipitated by a previous lot of this antibody (A303-673A lot 7) and a second antibody against a different epitope of TFEB (A303-672A). For blotting immunoprecipitated TFEB, A303-673A was used at 0.1 µg/ml. *Detection:* Chemiluminescence with an exposure time of 10 seconds.