

Ro60 Antibody

Rabbit Polyclonal

Antigen Affinity Purified

Catalog No. A303-693A

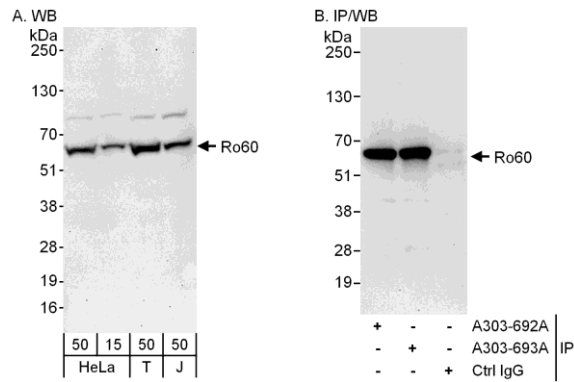
Lot No. A303-693A-1

Protein ID NP_004591.2

Gene ID 6738



APPLICATIONS	WB, IP
REACTIVITY TESTED	Human
PRESUMED REACTIVITY	Based on 100% sequence identity, this antibody is predicted to react with Rhesus Monkey, Gorilla, Chimpanzee, Crab-eating macaque and Northern white-cheeked gibbon.
ISOTYPE	IgG
AMOUNT	0.1 ml at 1 mg/ml
STORAGE/SHELF LIFE	2 - 8° C / 1 year from date of receipt
PHYSICAL STATE	Liquid
BUFFER	Tris-citrate/phosphate buffer, pH 7 to 8 containing 0.09% Sodium Azide
ORIGIN	USA
PRODUCTION PROCEDURES	<p>Antibody was affinity purified using an epitope specific to Ro60 immobilized on solid support.</p> <p>The epitope recognized by A303-693A maps to a region between residue 488 and 538 of human 60 kDa Ribonucleoprotein Ro using the numbering given in entry NP_004591.2 (GeneID 6738).</p> <p>Antibody concentration was determined by extinction coefficient: absorbance at 280 nm of 1.4 equals 1.0 mg of IgG.</p>
APPLICATIONS	<p>Centrifuge tube to remove product from lid. Optimal working dilutions should be determined experimentally by the investigator. Prepare working dilution immediately before use.</p> <p>Western Blot 1:2,000 to 1:10,000</p> <p>Immunoprecipitation 2 to 10 µg/mg lysate</p>
APPLICATION NOTES	Validation by IP/Western Blot was performed using a 4-20% SDS-PAGE gel and ReliaBLOT® Reagents (Cat. No. WB120).
ADDITIONAL INFO	<p>http://www.bethyl.com/product/A303-693A</p> <p>Use the link above to view SDS, a current list of citations, and other product specific information.</p>



Detection of Human Ro60 by Western Blot and Immunoprecipitation. *Samples:* Whole cell lysate from HeLa (15 and 50 μg for WB; 1 mg for IP, 20% of IP loaded), 293T (T; 50 μg) and Jurkat (J; 50 μg) cells. *Antibodies:* Affinity purified rabbit anti-Ro60 antibody A303-693A used for WB at 0.1 $\mu\text{g}/\text{ml}$ (A) and 0.4 $\mu\text{g}/\text{ml}$ (B) and used for IP at 6 $\mu\text{g}/\text{mg}$ lysate. Ro60 was also immunoprecipitated by rabbit anti-Ro60 antibody A303-692A, which recognizes an upstream epitope. *Detection:* Chemiluminescence with exposure times of 30 seconds (A and B).