

# BCKDHA Antibody

Rabbit Polyclonal

Antigen Affinity Purified	Protein ID	NP_000700.1
Catalog No. A303-790A	GeneID	593
Lot No. A303-790A-1		



---

<b>APPLICATIONS</b>	WB, IP
<b>SPECIES REACTIVITY</b>	Human
<b>PRESUMED REACTIVITY</b>	Based on 100% sequence identity, this antibody is predicted to react with Rat and Chimpanzee
<b>AMOUNT</b>	100 µl
<b>CONCENTRATION</b>	1000 µg/ml
<b>STORAGE/SHELF LIFE</b>	2 - 8° C / 1 year from date of receipt
<b>PHYSICAL STATE</b>	Liquid
<b>BUFFER</b>	Tris-citrate/phosphate buffer, pH 7 to 8 containing 0.09% Sodium Azide
<b>ISOTYPE</b>	IgG
<b>ORIGIN</b>	USA
<b>PRODUCTION PROCEDURES</b>	Antibody was affinity purified using an epitope specific to BCKDHA immobilized on solid support.

The epitope recognized by A303-790A maps to a region between residue 395 and 445 of human Branched chain keto acid dehydrogenase E1, alpha polypeptide using the numbering given in entry NP\_000700.1 (GeneID 593).

Antibody concentration was determined by extinction coefficient: absorbance at 280 nm of 1.4 equals 1.0 mg of IgG.

**APPLICATIONS** Centrifuge tube to remove product from lid. Optimal working dilutions should be determined experimentally by the investigator. Prepare working dilution immediately before use.

Western Blot 1:2,000 - 1:10,000

Immunoprecipitation 2 - 10 µg/mg lysate

**APPLICATION NOTES** Western blot of immunoprecipitates performed using Normal Pig Serum (Cat. No. S100-020), Goat anti-Rabbit Light Chain HRP Conjugate (Cat. No. A120-113P) and 4-20% SDS-PAGE (link to IP-western blot protocol in Additional Info section below).

Western blot of lysates performed using standard western blot reagents and 4-20% SDS-PAGE.

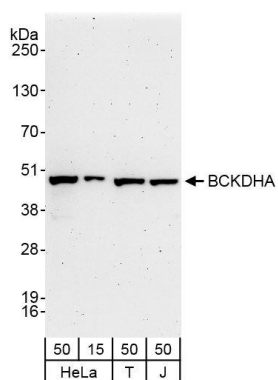
**ADDITIONAL INFO**

<https://www.bethyl.com/product/A303-790A>

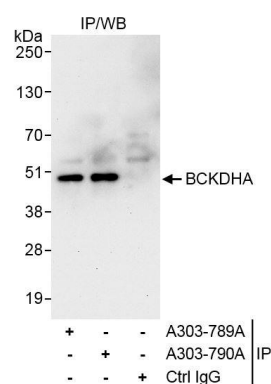
Use the link above to view SDS, a current list of citations, and other product specific information.

IP-western blot protocol: [https://www.bethyl.com/content/protocol\\_IP\\_WB](https://www.bethyl.com/content/protocol_IP_WB)

This document certifies that this product has met all of the quality control standards defined by Bethyl Laboratories, Inc.  
Eric McIntush, PhD | Chief Scientific Officer Date: June 21, 2019



**Detection of human BCKDHA by western blot.** *Samples:* Whole cell lysate from HeLa (15 and 50 µg); HEK293T (T, 50 µg) and Jurkat (J; 50 µg) cells. *Antibodies:* Affinity purified rabbit anti-BCKDHA antibody A303-790A (A303-790A-1) used for WB at 0.1 µg/ml. *Detection:* Chemiluminescence with exposure times of 3 minutes.



**Detection of human BCKDHA by western blot of immunoprecipitates.** *Samples:* Whole cell lysate (1.0 mg per IP reaction, 20% of IP loaded) from HeLa cells. *Antibodies:* Affinity purified rabbit anti-BCKDHA antibody A303-790A (lot A303-790A-1) used for IP at 6 µg per reaction. BCKDHA was also immunoprecipitated by rabbit anti-BCKDHA antibody A303-789A. For blotting immunoprecipitated BCKDHA, A303-790A was used at 1 µg/ml. *Detection:* Chemiluminescence with exposure times of 30 seconds.