

# CD44 Antibody

Rabbit Polyclonal

Antigen Affinity Purified

Protein ID NP\_000601.3

Catalog No. A303-872A-M

GeneID 960

Lot No. A303-872A-M-12

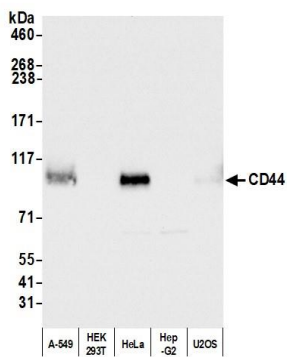


<b>APPLICATIONS</b>	WB, IP, IHC
<b>PRESUMED REACTIVITY</b>	Based on 100% sequence identity, this antibody is predicted to react with Human, Bovine, Horse and Golden hamster
<b>AMOUNT</b>	100 µl (10 blots)
<b>CONCENTRATION</b>	40 µg/ml
<b>STORAGE/SHELF LIFE</b>	2 – 8° C / 1 year from date of receipt
<b>PHYSICAL STATE</b>	Liquid
<b>BUFFER</b>	Tris-buffered Saline containing 0.1% BSA and 0.09% Sodium Azide
<b>ISOTYPE</b>	IgG
<b>ORIGIN</b>	USA
<b>PRODUCTION PROCEDURES</b>	Antibody was affinity purified using an epitope specific to CD44 immobilized on solid support.

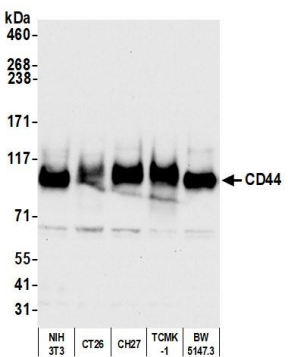
The epitope recognized by A303-872A-M maps to a region between residue 692 and 742 of human Cell Surface Glycoprotein CD44 using the numbering given in entry NP\_000601.3 (GeneID 960).

<b>APPLICATIONS</b>	Centrifuge tube to remove product from lid. Optimal working dilutions should be determined experimentally by the investigator. Prepare working dilution immediately before use.
	Western Blot 1:1000
	Immunoprecipitation The antibody contained within A303-872A-M has been qualified for use in immunoprecipitation; however, we recommend using the alternative formulation of this antibody found as product A303-872A.
	Immunohistochemistry 1:40 to 1:200. Epitope retrieval with citrate buffer pH6.0 is recommended for FFPE tissue sections.
<b>ADDITIONAL INFO</b>	<a href="https://www.bethyl.com/product/A303-872A-M">https://www.bethyl.com/product/A303-872A-M</a> Use the link above to view SDS, a current list of citations, and other product specific information. IP-western blot protocol: <a href="https://www.bethyl.com/content/protocol_IP_WB">https://www.bethyl.com/content/protocol_IP_WB</a>

This document certifies that this product has met all of the quality control standards defined by Bethyl Laboratories, Inc.  
Eric McIntush, PhD | Chief Scientific Officer Date: October 15, 2020



**Detection of human CD44 by western blot.** *Samples:* Whole cell lysate (10 µg) from A-549, HEK293T, HeLa, Hep-G2, and U2OS cells prepared using NETN lysis buffer. *Antibody:* Affinity purified rabbit anti-CD44 antibody A303-872A-M (lot A303-872A-M-12) used for WB at 1:1,000. *Detection:* Chemiluminescence with an exposure time of 3 seconds.



**Detection of mouse CD44 by western blot.** *Samples:* Whole cell lysate (50 µg) from NIH 3T3, CT26, CH27, TCMK-1, and BW5147.3 cells prepared using NETN lysis buffer. *Antibody:* Affinity purified rabbit anti-CD44 antibody A303-872A-M (lot A303-872A-M-12) used for WB at 1:1,000. *Detection:* Chemiluminescence with an exposure time of 10 seconds.