

KRR1 Antibody

Rabbit Polyclonal

Antigen Affinity Purified

Protein ID NP_008974.5

Catalog No. A303-898A

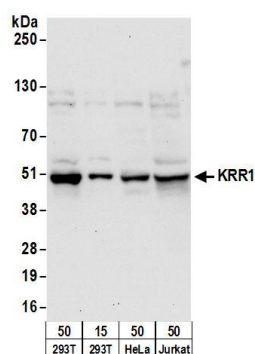
GeneID 11103

Lot No. A303-898A-1

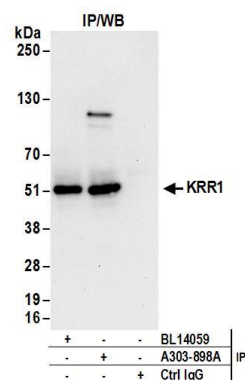


APPLICATIONS	WB, IP
SPECIES REACTIVITY	Human
AMOUNT	100 µl
CONCENTRATION	1000 µg/ml
STORAGE/SHELF LIFE	2 - 8° C / 1 year from date of receipt
PHYSICAL STATE	Liquid
BUFFER	Tris-citrate/phosphate buffer, pH 7 to 8 containing 0.09% Sodium Azide
ISOTYPE	IgG
ORIGIN	USA
PRODUCTION PROCEDURES	<p>Antibody was affinity purified using an epitope specific to KRR1 immobilized on solid support.</p> <p>The epitope recognized by A303-898A maps to a region between residue 300 and 350 of human Small Subunit (SSU) Processome Component using the numbering given in entry NP_008974.5 (GeneID 11103).</p> <p>Antibody concentration was determined by extinction coefficient: absorbance at 280 nm of 1.4 equals 1.0 mg of IgG.</p>
APPLICATIONS	<p>Centrifuge tube to remove product from lid. Optimal working dilutions should be determined experimentally by the investigator. Prepare working dilution immediately before use.</p> <p>Western Blot 1:2,000 - 1:10,000</p> <p>Immunoprecipitation 2 - 10 µg/mg lysate</p>
APPLICATION NOTES	<p>Western blot of immunoprecipitates performed using Normal Pig Serum (Cat. No. S100-020), Goat anti-Rabbit Light Chain HRP Conjugate (Cat. No. A120-113P) and 4-20% SDS-PAGE (link to IP-western blot protocol in Additional Info section below).</p> <p>Western blot of lysates performed using standard western blot reagents and 4-20% SDS-PAGE.</p>
ADDITIONAL INFO	<p>https://www.bethyl.com/product/A303-898A</p> <p>Use the link above to view SDS, a current list of citations, and other product specific information. IP-western blot protocol: https://www.bethyl.com/content/protocol_IP_WB</p>

This document certifies that this product has met all of the quality control standards defined by Bethyl Laboratories, Inc.
Eric McIntush, PhD | Chief Scientific Officer Date: June 21, 2019



Detection of human KRR1 by western blot. *Samples:* Whole cell lysate from HEK293T (15 and 50 μ g), HeLa (50 μ g), and Jurkat (50 μ g) cells. *Antibodies:* Affinity purified rabbit anti-KRR1 antibody A303-898A (lot A303-898A-1) used for WB at 0.1 μ g/ml. *Detection:* Chemiluminescence with an exposure time of 30 seconds.



Detection of human KRR1 by western blot of immunoprecipitates. *Samples:* Whole cell lysate (1 mg for IP; 20% of IP loaded) from HEK293T cells. *Antibodies:* Affinity purified rabbit anti-KRR1 antibody A303-898A (lot A303-898A-1) used for IP at 6 μ g/mg lysate. KRR1 was also immunoprecipitated by rabbit anti-KRR1 antibody BL14059. For blotting immunoprecipitated KRR1, A303-898A was used at 1 μ g/ml. *Detection:* Chemiluminescence with an exposure time of 10 seconds.