

53BP1 Antibody

Goat Polyclonal

Antigen Affinity Purified Protein ID NP_005648.1

Catalog No. A303-906A-T GenelD 7158

Lot No. A303-906A-T-1

APPLICATIONS	IP, IHC
SPECIES REACTIVITY	Human
AMOUNT	10 µl
CONCENTRATION	1000 µg/ml
STORAGE/SHELF LIFE	2 – 8°C / 1 year from date of receipt
PHYSICAL STATE	Liquid
BUFFER	Tris-citrate/phosphate buffer, pH 7 to 8 containing 0.09% Sodium Azide
ISOTYPE	IgG
ORIGIN	USA
PRODUCTION PROCEDURES	Antibody was affinity purified using an epitope specific to 53BP1 immobilized on solid support.

The epitope recognized by A303-906A-T maps to a region between residue 350 and 400 of human Tumor Protein p53 Binding Protein, 1 using the numbering given in entry NP_005648.1 (GenelD 7158).

Immunoglobulin concentration was determined by extinction coefficient: absorbance at 280 nm of 1.4 equals 1.0 mg of IgG.

APPLICATIONS Centrifuge tube to remove product from lid. Optimal working dilutions should be determined experimentally by the investigator. Prepare working dilution immediately before use.

Western Blot Not recommended

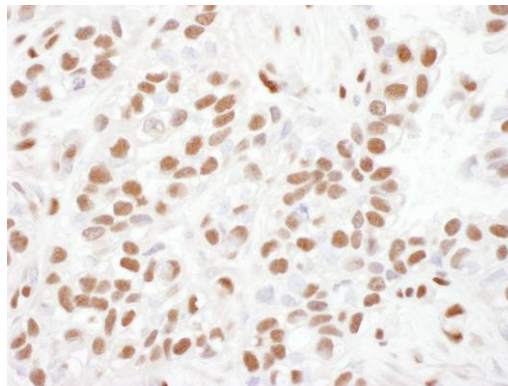
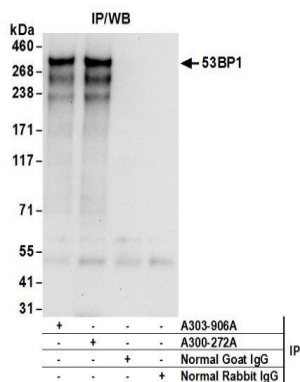
Immunoprecipitation 2 – 10 µg/mg lysate

Immunohistochemistry 1:500 – 1:2,000. Epitope retrieval with citrate buffer pH 6.0 is recommended for FFPE tissue sections.

ADDITIONAL INFO <https://www.bethyl.com/product/A303-906A-T>

Use the link above to view SDS, a current list of citations, and other product specific information.

This document certifies that this product has met all of the quality control standards defined by Bethyl Laboratories, Inc.
Michael Spencer, PhD Date: June 6, 2022



Detection of human 53BP1 by western blot of immunoprecipitates. *Samples:* Whole cell lysate (1 mg for IP; 20% of IP loaded) from HEK293T cells. *Antibodies:* Affinity purified goat anti-53BP1 antibody A303-906A (lot A303-906A-1) used for IP at 6 $\mu\text{g}/\text{mg}$ lysate. 53BP1 was also immunoprecipitated by rabbit anti-53BP1 antibody A300-272A. For blotting immunoprecipitated 53BP1, A300-272A was used at 1 $\mu\text{g}/\text{ml}$. *Detection:* Chemiluminescence with an exposure time of 10 seconds.

Detection of human 53BP1 by immunohistochemistry. *Sample:* FFPE section of human breast carcinoma. *Antibody:* Affinity purified goat anti-53BP1 (Cat. No. A303-906A lot 1) used at a dilution of 1:1,000 (1 $\mu\text{g}/\text{ml}$). > *Detection:* DAB