

RPS11 Antibody

Rabbit Polyclonal

Antigen Affinity Purified Protein ID NP_001006.1

Catalog No. A303-937A-T GeneID 6205

Lot No. A303-937A-T-1

APPLICATIONS	WB, IP, IHC
SPECIES REACTIVITY	Human, Mouse
PRESUMED REACTIVITY	Based on 100% sequence identity, this antibody is predicted to react with Rat, X. laevis, Bovine and Dog
AMOUNT	10 µl
CONCENTRATION	1000 µg/ml
STORAGE/SHELF LIFE	2 – 8°C / 1 year from date of receipt
PHYSICAL STATE	Liquid
BUFFER	Tris-citrate/phosphate buffer, pH 7 to 8 containing 0.09% Sodium Azide
ISOTYPE	IgG
ORIGIN	USA
PRODUCTION PROCEDURES	Antibody was affinity purified using an epitope specific to RPS11 immobilized on solid support.

The epitope recognized by A303-937A-T maps to a region between residue 108 and 158 of human Ribosomal Protein S11 using the numbering given in entry NP_001006.1 (GeneID 6205).

APPLICATIONS Centrifuge tube to remove product from lid. Optimal working dilutions should be determined experimentally by the investigator. Prepare working dilution immediately before use.

Western Blot 1:2,000 – 1:10,000

Immunoprecipitation 2 – 10 µg/mg lysate

Immunohistochemistry 1:500 – 1:2,000. Epitope retrieval with citrate buffer pH 6.0 is recommended for FFPE tissue sections.

ADDITIONAL INFO <https://www.bethyl.com/product/A303-937A-T>

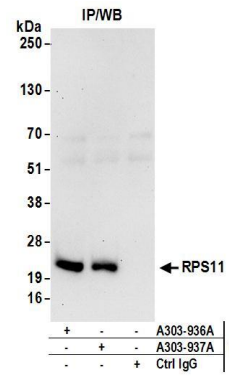
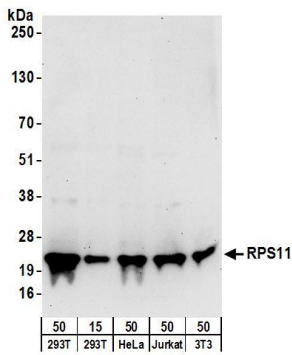
Use the link above to view SDS, a current list of citations, and other product specific information.

IP-western blot protocol: https://www.bethyl.com/content/protocol_IP_WB

This document certifies that this product has met all of the quality control standards defined by Bethyl Laboratories, Inc.

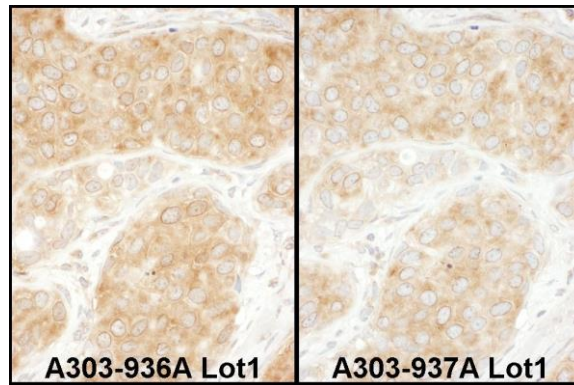
Michael Spencer, PhD

Date: June 6, 2022



Detection of human and mouse RPS11 by western blot.
Samples: Whole cell lysate from HEK293T (15 and 50 µg), HeLa (50µg), Jurkat (50µg), and mouse NIH 3T3 (50µg) cells. *Antibodies:* Affinity purified rabbit anti-RPS11 antibody A303-937A (lot A303-937A-1) used for WB at 0.1 µg/ml. *Detection:* Chemiluminescence with an exposure time of 30 seconds.

Detection of human RPS11 by western blot of immunoprecipitates. *Samples:* Whole cell lysate (1 mg for IP; 20% of IP loaded) from HEK293T cells. *Antibodies:* Affinity purified rabbit anti-RPS11 antibody A303-937A (lot A303-937A-1) used for IP at 6 µg/mg lysate. RPS11 was also immunoprecipitated by rabbit anti-RPS11 antibody A303-936A. For blotting immunoprecipitated RPS11, A303-937A was used at 0.4 µg/ml. *Detection:* Chemiluminescence with an exposure time of 30 seconds.



Detection of human RPS11 by immunohistochemistry.
Samples: FFPE serial sections of human breast carcinoma.
Antibody: Affinity purified rabbit anti-RPS11 (Cat. No. A303-939A Lot1, left image and Cat. No. A303-937A Lot1, right image) used at a dilution of 1:1,000 (1 µg/ml).
Detection: DAB