

# DBC1 /p30 DBC Antibody

Goat Polyclonal

Antigen Affinity Purified Protein ID NP\_066997.3

Catalog No. A303-942A-T GenelD 57805

Lot No. A303-942A-T-1

---

<b>APPLICATIONS</b>	WB, IP, IHC
<b>SPECIES REACTIVITY</b>	Human, Mouse
<b>PRESUMED REACTIVITY</b>	Based on 100% sequence identity, this antibody is predicted to react with Orangutan
<b>AMOUNT</b>	10 µl
<b>CONCENTRATION</b>	1000 µg/ml
<b>STORAGE/SHELF LIFE</b>	2 – 8°C / 1 year from date of receipt
<b>PHYSICAL STATE</b>	Liquid
<b>BUFFER</b>	Tris-citrate/phosphate buffer, pH 7 to 8 containing 0.09% Sodium Azide
<b>ISOTYPE</b>	IgG
<b>ORIGIN</b>	USA
<b>PRODUCTION PROCEDURES</b>	Antibody was affinity purified using an epitope specific to DBC1 /p30 DBC immobilized on solid support.

The epitope recognized by A303-942A-T maps to a region between residue 873 to 923 of human p30 DBC Protein using the numbering given in entry NP\_066997.3 (GeneID 57805).

**APPLICATIONS** Centrifuge tube to remove product from lid. Optimal working dilutions should be determined experimentally by the investigator. Prepare working dilution immediately before use.

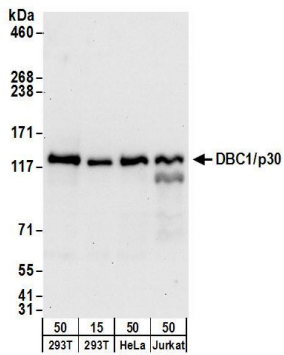
Western Blot 1:2,000 – 1:10,000

Immunoprecipitation 2 – 10 µg/mg lysate

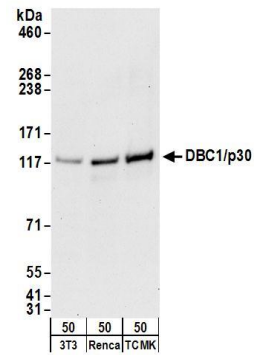
Immunohistochemistry 1:1,000 – 1:5,000. Epitope retrieval with citrate buffer pH 6.0 is recommended for FFPE tissue sections.

**ADDITIONAL INFO** <https://www.bethyl.com/product/A303-942A-T>  
Use the link above to view SDS, a current list of citations, and other product specific information.

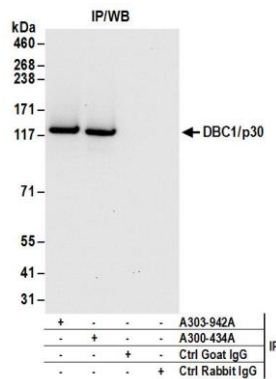
This document certifies that this product has met all of the quality control standards defined by Bethyl Laboratories, Inc.  
Michael Spencer, PhD Date: June 6, 2022



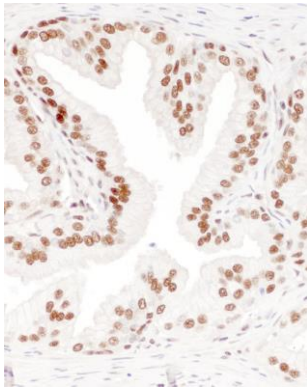
**Detection of human DBC1 /p30 by western blot. Samples:** Whole cell lysate from HEK293T (15 and 50 µg), HeLa (50 µg), and Jurkat (50µg) cells. **Antibodies:** Affinity purified goat anti-DBC1 /p30 antibody A303-942A (lot A303-942A-1) used for WB at 0.1 µg/ml. **Detection:** Chemiluminescence with an exposure time of 30 seconds.



**Detection of mouse DBC1 /p30 by western blot. Samples:** Whole cell lysate (50 µg) from NIH 3T3 , Renca, and TCMK-1 cells. **Antibodies:** Affinity purified goat anti-DBC1 /p30 antibody A303-942A (lot A303-942A-1) used for WB at 0.1 µg/ml. **Detection:** Chemiluminescence with an exposure time of 30 seconds.



**Detection of human DBC1 /p30 by western blot of immunoprecipitates. Samples:** Whole cell lysate (1 mg for IP; 20% of IP loaded) from HEK293T cells. **Antibodies:** Affinity purified goat anti-DBC1 /p30 antibody A303-942A (lot A303-942A-1) used for IP at 6 µg/mg lysate. DBC1 /p30 was also immunoprecipitated by rabbit anti-DBC1 /p30 antibody A300-434A. For blotting immunoprecipitated DBC1 /p30, A300-434A was used at 1 µg/ml. **Detection:** Chemiluminescence with an exposure time of 10 seconds.

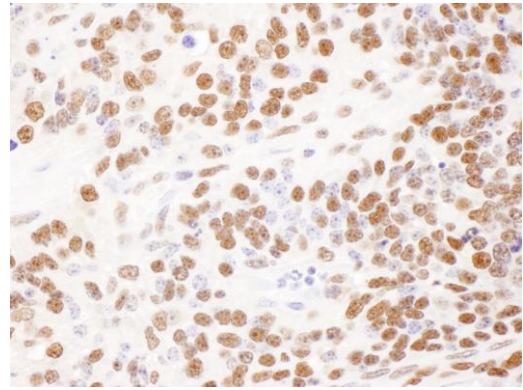


**Detection of human DBC1 /p30 by immunohistochemistry.**

*Sample:* FFPE section of human prostate carcinoma.

*Antibody:* Affinity purified rabbit anti-BC1 /p30 (Cat. No. A303-942A Lot1) used at a dilution of 1:1,000 (1 µg/ml).

*Detection:* DAB



**Detection of mouse DBC1 /p30 by immunohistochemistry.**

*Sample:* FFPE section of mouse teratoma. *Antibody:* Affinity purified rabbit anti-BC1 /p30 (Cat. No. A303-942A Lot1)

used at a dilution of 1:1,000 (1 µg/ml). *Detection:* DAB