

# Sp1 Antibody

Goat Polyclonal

Antigen Affinity Purified

Protein ID NP\_612482.2

Catalog No. A303-944A

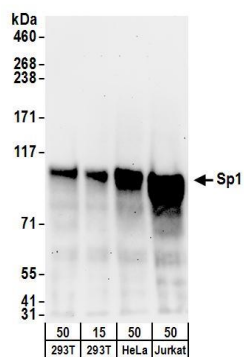
GeneID 6667

Lot No. A303-944A-1

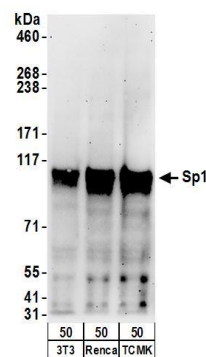


<b>APPLICATIONS</b>	WB, IP, IHC						
<b>SPECIES REACTIVITY</b>	Human, Mouse						
<b>AMOUNT</b>	100 µl						
<b>CONCENTRATION</b>	1000 µg/ml						
<b>STORAGE/SHELF LIFE</b>	2 - 8° C / 1 year from date of receipt						
<b>PHYSICAL STATE</b>	Liquid						
<b>BUFFER</b>	Tris-citrate/phosphate buffer, pH 7 to 8 containing 0.09% Sodium Azide						
<b>ISOTYPE</b>	IgG						
<b>ORIGIN</b>	USA						
<b>PRODUCTION PROCEDURES</b>	<p>Antibody was affinity purified using an epitope specific to Sp1 immobilized on solid support.</p> <p>The epitope recognized by A303-944A maps to a region between residue 735 to 785 of human Sp1 Transcription Factor using the numbering given in entry NP_612482.2 (GeneID 6667).</p> <p>Antibody concentration was determined by extinction coefficient: absorbance at 280 nm of 1.4 equals 1.0 mg of IgG.</p>						
<b>APPLICATIONS</b>	<p>Centrifuge tube to remove product from lid. Optimal working dilutions should be determined experimentally by the investigator. Prepare working dilution immediately before use.</p> <table><tr><td>Western Blot</td><td>1:2,000 - 1:10,000</td></tr><tr><td>Immunoprecipitation</td><td>2 - 10 µg/mg lysate</td></tr><tr><td>Immunohistochemistry</td><td>1:1,000 - 1:5,000. Epitope retrieval with citrate buffer pH 6.0 is recommended for FFPE tissue sections.</td></tr></table>	Western Blot	1:2,000 - 1:10,000	Immunoprecipitation	2 - 10 µg/mg lysate	Immunohistochemistry	1:1,000 - 1:5,000. Epitope retrieval with citrate buffer pH 6.0 is recommended for FFPE tissue sections.
Western Blot	1:2,000 - 1:10,000						
Immunoprecipitation	2 - 10 µg/mg lysate						
Immunohistochemistry	1:1,000 - 1:5,000. Epitope retrieval with citrate buffer pH 6.0 is recommended for FFPE tissue sections.						
<b>APPLICATION NOTES</b>	Western blot of lysates performed using standard western blot reagents and 4-8% SDS-PAGE.						
<b>IHC HUMAN CONTROLS</b>	Breast Carcinoma, Colon Carcinoma, Ovarian Carcinoma, Prostate Carcinoma, Stomach Adenocarcinoma, Testicular Seminoma						
<b>IHC MOUSE CONTROLS</b>	Renal Cell Carcinoma						
<b>ADDITIONAL INFO</b>	<p><a href="https://www.bethyl.com/product/A303-944A">https://www.bethyl.com/product/A303-944A</a></p> <p>Use the link above to view SDS, a current list of citations, and other product specific information.</p>						

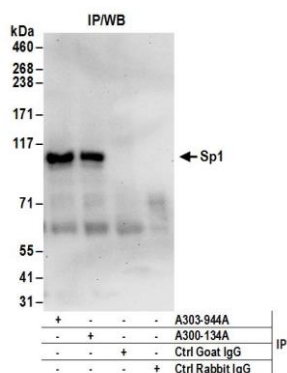
This document certifies that this product has met all of the quality control standards defined by Bethyl Laboratories, Inc.  
Eric McIntush, PhD | Chief Scientific Officer Date: June 21, 2019



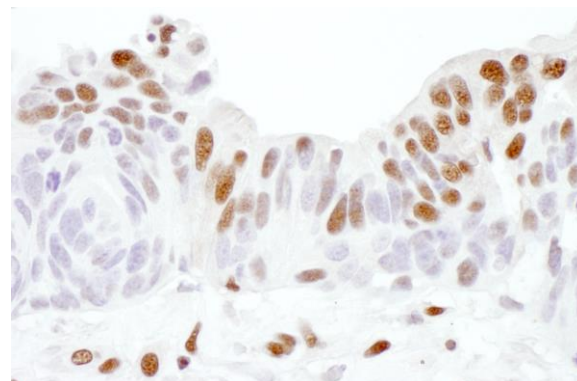
**Detection of human Sp1 by western blot.** *Samples:* Whole cell lysate from HEK293T (15 and 50  $\mu$ g), HeLa (50 $\mu$ g), and Jurkat (50 $\mu$ g) cells. *Antibodies:* Affinity purified goat anti-Sp1 antibody A303-944A (lot A303-944A-1) used for WB at 0.1  $\mu$ g/ml. *Detection:* Chemiluminescence with an exposure time of 3 minutes.



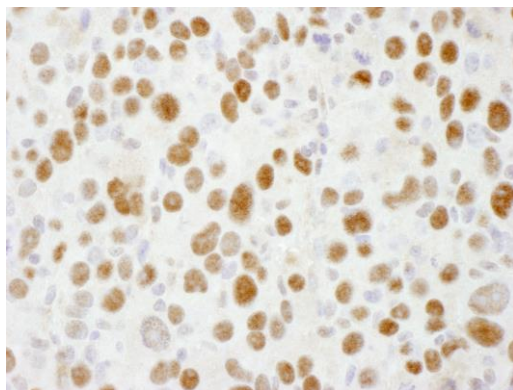
**Detection of mouse Sp1 by western blot.** *Samples:* Whole cell lysate (50  $\mu$ g) from NIH 3T3, Renca, and TCMK-1 cells. *Antibodies:* Affinity purified goat anti-Sp1 antibody A303-944A (lot A303-944A-1) used for WB at 0.4  $\mu$ g/ml. *Detection:* Chemiluminescence with an exposure time of 3 minutes.



**Detection of human Sp1 by western blot of immunoprecipitates.** *Samples:* Whole cell lysate (1 mg for IP; 20% of IP loaded) from HEK293T cells. *Antibodies:* Affinity purified goat anti-Sp1 antibody A303-944A (lot A303-944A-1) used for IP at 6  $\mu$ g/mg lysate. Sp1 was also immunoprecipitated by rabbit anti-Sp1 antibody A300-134A. For blotting immunoprecipitated Sp1, A303-944A was used at 1  $\mu$ g/ml. *Detection:* Chemiluminescence with an exposure time of 30 seconds.



**Detection of human Sp1 by immunohistochemistry.** *Sample:* FFPE section of human ovarian carcinoma. *Antibody:* Affinity purified goat anti-Sp1 (Cat. No. A303-944A lot 1) used at a dilution of 1:5,000 (0.2  $\mu$ g/ml). *Detection:* DAB

**Detection of mouse Sp1 by immunohistochemistry.**

*Sample:* FFPE section of mouse renal cell carcinoma.

*Antibody:* Affinity purified goat anti-Sp1 (Cat. No. A303-944A lot 1) used at a dilution of 1:1,000 (1 µg/ml).

*Detection:* DAB