

# SBP2 Antibody

Rabbit Polyclonal

Antigen Affinity Purified

Protein ID NP\_076982.3

Catalog No. A303-949A-T

GeneID 79048

Lot No. A303-949A-T-1

---

<b>APPLICATIONS</b>	WB, IP
<b>SPECIES REACTIVITY</b>	Human
<b>PRESUMED REACTIVITY</b>	Based on 100% sequence identity, this antibody is predicted to react with Rat
<b>AMOUNT</b>	10 µl
<b>CONCENTRATION</b>	1000 µg/ml
<b>STORAGE/SHELF LIFE</b>	2 – 8°C / 1 year from date of receipt
<b>PHYSICAL STATE</b>	Liquid
<b>BUFFER</b>	Tris-citrate/phosphate buffer, pH 7 to 8 containing 0.09% Sodium Azide
<b>ISOTYPE</b>	IgG
<b>ORIGIN</b>	USA
<b>PRODUCTION PROCEDURES</b>	Antibody was affinity purified using an epitope specific to SBP2 immobilized on solid support.

The epitope recognized by A303-949A-T maps to a region between residue 804 to 854 of human SECIS Binding Protein 2 using the numbering given in entry NP\_076982.3 (GeneID 79048).

Antibody concentration was determined by extinction coefficient: absorbance at 280 nm of 1.4 equals 1.0 mg of IgG.

**APPLICATIONS** Centrifuge tube to remove product from lid. Optimal working dilutions should be determined experimentally by the investigator. Prepare working dilution immediately before use.

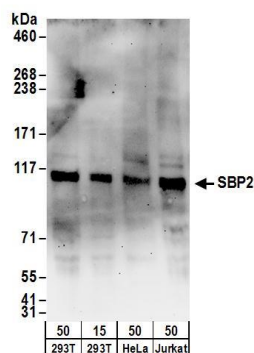
Western Blot 1:500 – 1:2,500

Immunoprecipitation 2 – 10 µg/mg lysate

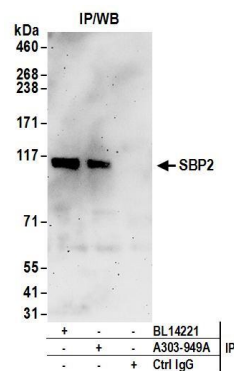
**ADDITIONAL INFO** <https://www.bethyl.com/product/A303-949A-T>

Use the link above to view SDS, a current list of citations, and other product specific information. IP-western blot protocol: [https://www.bethyl.com/content/protocol\\_IP\\_WB](https://www.bethyl.com/content/protocol_IP_WB)

This document certifies that this product has met all of the quality control standards defined by Bethyl Laboratories, Inc.  
Michael Spencer, PhD Date: June 6, 2022



**Detection of human SBP2 by western blot.** *Samples:* Whole cell lysate from HEK293T (15 and 50  $\mu$ g), HeLa (50 $\mu$ g), and Jurkat (50 $\mu$ g) cells. *Antibodies:* Affinity purified rabbit anti-SBP2 antibody A303-949A (lot A303-949A-1) used for WB at 1  $\mu$ g/ml. *Detection:* Chemiluminescence with an exposure time of 3 minutes.



**Detection of human SBP2 by western blot of immunoprecipitates.** *Samples:* Whole cell lysate (1 mg for IP; 20% of IP loaded) from HEK293T cells. *Antibodies:* Affinity purified rabbit anti-SBP2 antibody A303-949A (lot A303-949A-1) used for IP at 6  $\mu$ g/mg lysate. SBP2 was also immunoprecipitated by rabbit anti-SBP2 antibody BL14221. For blotting immunoprecipitated SBP2, A303-949A was used at 1  $\mu$ g/ml. *Detection:* Chemiluminescence with an exposure time of 3 minutes.