

METTL1 Antibody

Rabbit Polyclonal

Antigen Affinity Purified Protein ID NP_005362.3

Catalog No. A303-964A-T GeneID 4234

Lot No. A303-964A-T-1

APPLICATIONS	WB
SPECIES REACTIVITY	Human, Mouse
AMOUNT	10 µl
CONCENTRATION	1000 µg/ml
STORAGE/SHELF LIFE	2 – 8°C / 1 year from date of receipt
PHYSICAL STATE	Liquid
BUFFER	Tris-citrate/phosphate buffer, pH 7 to 8 containing 0.09% Sodium Azide
ISOTYPE	IgG
ORIGIN	USA
PRODUCTION PROCEDURES	Antibody was affinity purified using an epitope specific to METTL1 immobilized on solid support.

The epitope recognized by A303-964A-T maps to a region between residue 175 to 225 of human Methyltransferase Like 1 using the numbering given in entry NP_005362.3 (GeneID 4234).

APPLICATIONS Centrifuge tube to remove product from lid. Optimal working dilutions should be determined experimentally by the investigator. Prepare working dilution immediately before use.

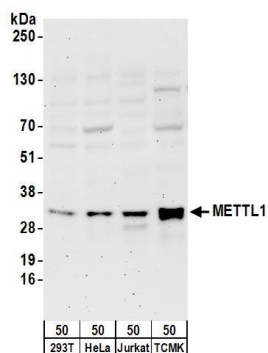
Western Blot 1:1,000 – 1:5,000

Immunoprecipitation Not recommended

ADDITIONAL INFO <https://www.bethyl.com/product/A303-964A-T>

Use the link above to view SDS, a current list of citations, and other product specific information.

This document certifies that this product has met all of the quality control standards defined by Bethyl Laboratories, Inc.
Michael Spencer, PhD Date: June 6, 2022

**Detection of human and mouse METTL1 by western blot.**

Samples: Whole cell lysate (50 µg) from HEK293T, HeLa, Jurkat, and mouse TCMK-1 cells. *Antibodies:* Affinity purified rabbit anti-METTL1 antibody A303-964A (lot A303-964A-1) used for WB at 0.4 µg/ml. *Detection:* Chemiluminescence with an exposure time of 3 minutes.