

EDC3 Antibody

Rabbit Polyclonal

Antigen Affinity Purified

Protein ID NP_079359.2

Catalog No. A303-986A

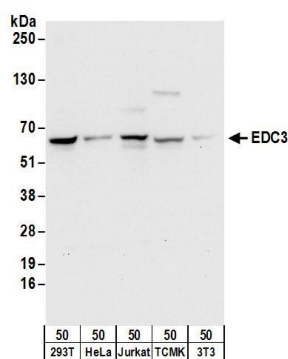
GeneID 80153

Lot No. A303-986A-1



APPLICATIONS	WB, IP
SPECIES REACTIVITY	Human, Mouse
PRESUMED REACTIVITY	Based on 100% sequence identity, this antibody is predicted to react with Orangutan
AMOUNT	100 µl
CONCENTRATION	1000 µg/ml
STORAGE/SHELF LIFE	2 - 8° C / 1 year from date of receipt
PHYSICAL STATE	Liquid
BUFFER	Tris-citrate/phosphate buffer, pH 7 to 8 containing 0.09% Sodium Azide
ISOTYPE	IgG
ORIGIN	USA
PRODUCTION PROCEDURES	<p>Antibody was affinity purified using an epitope specific to EDC3 immobilized on solid support.</p> <p>The epitope recognized by A303-986A maps to a region between residue 25 to 75 of human Enhancer of mRNA Decapping 3 using the numbering given in entry NP_079359.2 (GeneID 80153).</p> <p>Antibody concentration was determined by extinction coefficient: absorbance at 280 nm of 1.4 equals 1.0 mg of IgG.</p>
APPLICATIONS	<p>Centrifuge tube to remove product from lid. Optimal working dilutions should be determined experimentally by the investigator. Prepare working dilution immediately before use.</p> <p>Western Blot 1:2,000 - 1:10,000</p> <p>Immunoprecipitation 2 - 10 µg/mg lysate</p>
APPLICATION NOTES	<p>Western blot of immunoprecipitates performed using Normal Pig Serum (Cat. No. S100-020), Goat anti-Rabbit Light Chain HRP Conjugate (Cat. No. A120-113P) and 4-20% SDS-PAGE (link to IP-western blot protocol in Additional Info section below).</p> <p>Western blot of lysates performed using standard western blot reagents and 4-20% SDS-PAGE.</p>
ADDITIONAL INFO	<p>https://www.bethyl.com/product/A303-986A</p> <p>Use the link above to view SDS, a current list of citations, and other product specific information.</p> <p>IP-western blot protocol: https://www.bethyl.com/content/protocol_IP_WB</p>

This document certifies that this product has met all of the quality control standards defined by Bethyl Laboratories, Inc.
Eric McIntush, PhD | Chief Scientific Officer Date: June 21, 2019

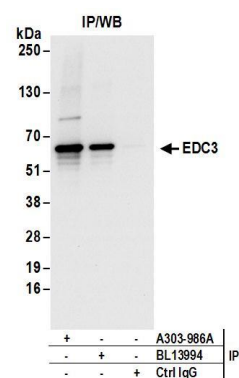


Detection of human and mouse EDC3 by western blot.

Samples: Whole cell lysate (50 µg) from HEK293T, HeLa, Jurkat, mouse TCMK-1, and mouse NIH 3T3 cells.

Antibodies: Affinity purified rabbit anti-EDC3 antibody A303-986A (lot A303-986A-1) used for WB at 0.1 µg/ml.

Detection: Chemiluminescence with an exposure time of 10 seconds.



Detection of human EDC3 by western blot of immunoprecipitates.

Samples: Whole cell lysate (1 mg for IP; 20% of IP loaded) from HEK293T cells. *Antibodies:* Affinity purified rabbit anti-EDC3 antibody A303-986A (lot A303-986A-1) used for IP at 6 µg/mg lysate. EDC3 was also immunoprecipitated by rabbit anti-EDC3 antibody BL13994. For blotting immunoprecipitated EDC3, A303-986A was used at 1 µg/ml. *Detection:* Chemiluminescence with an exposure time of 10 seconds.