

EXOSC10 Antibody

Rabbit Polyclonal

Antigen Affinity Purified

Protein ID NP_001001998.1

Catalog No. A303-987A-T

GeneID 5394

Lot No. A303-987A-T-1

APPLICATIONS	WB, IP, IHC
SPECIES REACTIVITY	Human, Mouse
AMOUNT	10 µl
CONCENTRATION	1000 µg/ml
STORAGE/SHELF LIFE	2 – 8°C / 1 year from date of receipt
PHYSICAL STATE	Liquid
BUFFER	Tris-citrate/phosphate buffer, pH 7 to 8 containing 0.09% Sodium Azide
ISOTYPE	IgG
ORIGIN	USA
PRODUCTION PROCEDURES	Antibody was affinity purified using an epitope specific to EXOSC10 immobilized on solid support.

The epitope recognized by A303-987A-T maps to a region between residue 200 to 250 of human Exosome Component 10 using the numbering given in entry NP_001001998.1 (GeneID 5394).

APPLICATIONS Centrifuge tube to remove product from lid. Optimal working dilutions should be determined experimentally by the investigator. Prepare working dilution immediately before use.

Western Blot 1:1,000 – 1:5,000

Immunoprecipitation 2 – 10 µg/mg lysate

Immunohistochemistry 1:500 – 1:2,000. Epitope retrieval with citrate buffer pH 6.0 is recommended for FFPE tissue sections.

ADDITIONAL INFO <https://www.bethyl.com/product/A303-987A-T>

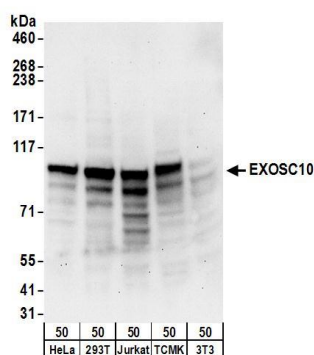
Use the link above to view SDS, a current list of citations, and other product specific information.

IP-western blot protocol: https://www.bethyl.com/content/protocol_IP_WB

This document certifies that this product has met all of the quality control standards defined by Bethyl Laboratories, Inc.

Michael Spencer, PhD

Date: June 6, 2022

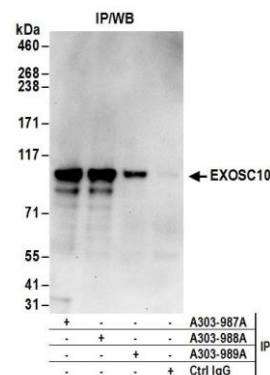


Detection of human and mouse EXOSC10 by western blot.

Samples: Whole cell lysate (50 µg) from HeLa, HEK293T, Jurkat, mouse TCMK-1, and mouse NIH 3T3 cells.

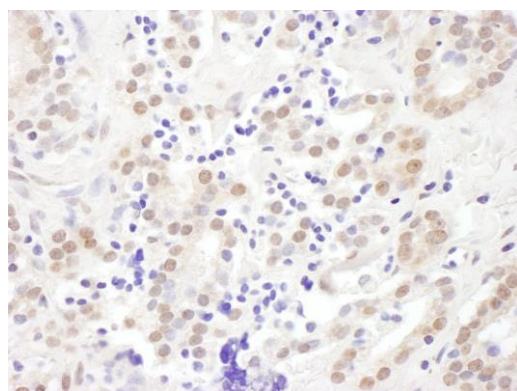
Antibodies: Affinity purified rabbit anti-EXOSC10 antibody A303-987A (lot A303-987A-1) used for WB at 0.4 µg/ml.

Detection: Chemiluminescence with an exposure time of 30 seconds.



Detection of human EXOSC10 by western blot of immunoprecipitates.

Samples: Whole cell lysate (1 mg for IP; 20% of IP loaded) from HeLa cells. *Antibodies:* Affinity purified rabbit anti-EXOSC10 antibody A303-987A (lot A303-987A-1) used for IP at 6 µg/mg lysate. EXOSC10 was also immunoprecipitated by rabbit anti-EXOSC10 antibodies A303-988A and A303-989A. For blotting immunoprecipitated EXOSC10, A303-987A was used at 1 µg/ml. *Detection:* Chemiluminescence with an exposure time of 30 seconds.

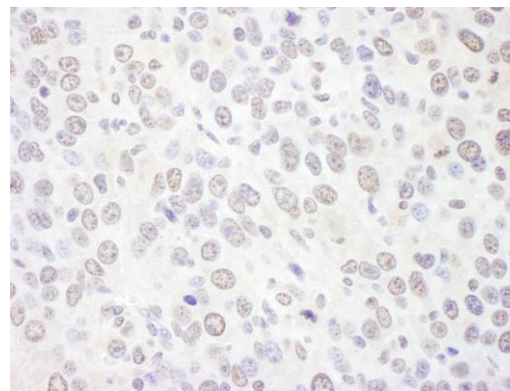


Detection of human EXOSC10 by immunohistochemistry.

Sample: FFPE section of human breast carcinoma.

Antibody: Affinity purified rabbit anti-EXOSC10 (Cat. No. A303-987A Lot1) used at a dilution of 1:1,000 (1 µg/ml).

Detection: DAB



Detection of mouse EXOSC10 by immunohistochemistry.

Sample: FFPE section of mouse renal cell carcinoma.

Antibody: Affinity purified rabbit anti-EXOSC10 (Cat. No. A303-987A Lot1) used at a dilution of 1:1,000 (1 µg/ml).

Detection: DAB