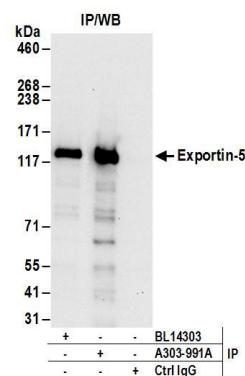
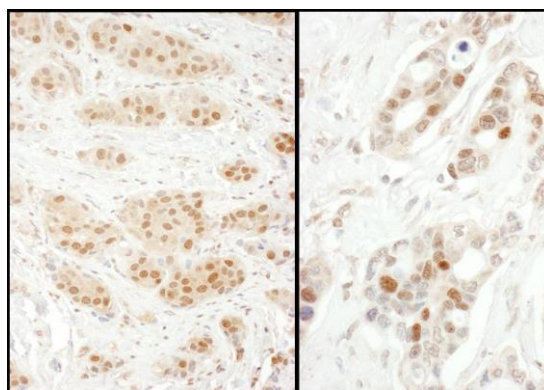


**Detection of human and mouse Exportin-5 by western blot.** *Samples:* Whole cell lysate (50 µg) from HEK293T, HeLa, Jurkat, mouse TCMK-1, and mouse NIH 3T3 cells. *Antibodies:* Affinity purified rabbit anti-Exportin-5 antibody A303-991A (lot A303-991A-1) used for WB at 0.1 µg/ml. *Detection:* Chemiluminescence with an exposure time of 10 seconds.



**Detection of human Exportin-5 by western blot of immunoprecipitates.** *Samples:* Whole cell lysate (1 mg for IP; 20% of IP loaded) from HEK293T cells. *Antibodies:* Affinity purified rabbit anti-Exportin-5 antibody A303-991A (lot A303-991A-1) used for IP at 6 µg/mg lysate. Exportin-5 was also immunoprecipitated by rabbit anti-Exportin-5 antibody BL14303. For blotting immunoprecipitated Exportin-5, A303-991A was used at 1 µg/ml. *Detection:* Chemiluminescence with an exposure time of 30 seconds.



**Detection of human Exportin-5 by immunohistochemistry.** *Samples:* FFPE sections of human breast carcinoma (left) and ovarian carcinoma (right). *Antibody:* Affinity purified rabbit anti-Exportin-5 (Cat. No. A303-991A Lot1) used at a dilution of 1:1,000 (1 µg/ml). *Detection:* DAB