

# Exportin-5 Antibody

Rabbit Polyclonal

Antigen Affinity Purified Protein ID NP\_065801.1

Catalog No. A303-991A-T GenelD 57510

Lot No. A303-991A-T-1

---

<b>APPLICATIONS</b>	WB, IP, IHC
<b>SPECIES REACTIVITY</b>	Human, Mouse
<b>AMOUNT</b>	10 µl
<b>CONCENTRATION</b>	1000 µg/ml
<b>STORAGE/SHELF LIFE</b>	2 – 8°C / 1 year from date of receipt
<b>PHYSICAL STATE</b>	Liquid
<b>BUFFER</b>	Tris-citrate/phosphate buffer, pH 7 to 8 containing 0.09% Sodium Azide
<b>ISOTYPE</b>	IgG
<b>ORIGIN</b>	USA
<b>PRODUCTION PROCEDURES</b>	Antibody was affinity purified using an epitope specific to Exportin-5 immobilized on solid support.

The epitope recognized by A303-991A-T maps to a region between residue 1154 to 1204 of human Exportin 5 using the numbering given in entry NP\_065801.1 (GenelD 57510).

**APPLICATIONS** Centrifuge tube to remove product from lid. Optimal working dilutions should be determined experimentally by the investigator. Prepare working dilution immediately before use.

Western Blot 1:2,000 – 1:10,000

Immunoprecipitation 2 – 10 µg/mg lysate

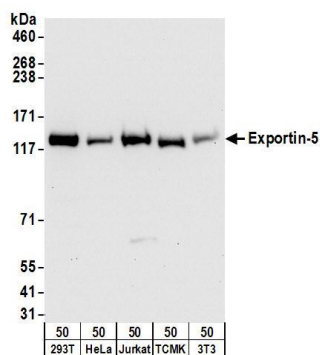
Immunohistochemistry 1:500 – 1:2,000. Epitope retrieval with citrate buffer pH 6.0 is recommended for FFPE tissue sections.

**ADDITIONAL INFO** <https://www.bethyl.com/product/A303-991A-T>

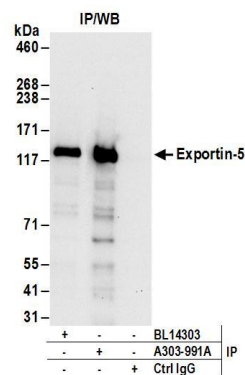
Use the link above to view SDS, a current list of citations, and other product specific information.

IP-western blot protocol: [https://www.bethyl.com/content/protocol\\_IP\\_WB](https://www.bethyl.com/content/protocol_IP_WB)

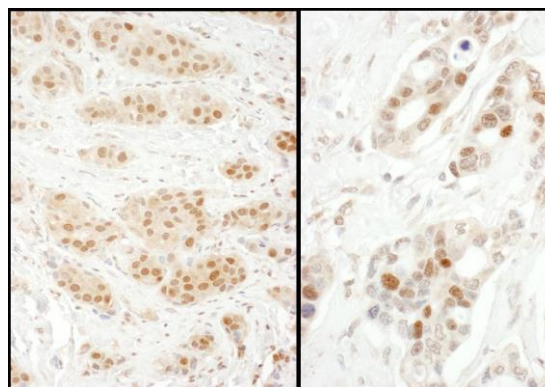
This document certifies that this product has met all of the quality control standards defined by Bethyl Laboratories, Inc.  
Michael Spencer, PhD Date: June 6, 2022



**Detection of human and mouse Exportin-5 by western blot.** *Samples:* Whole cell lysate (50 µg) from HEK293T, HeLa, Jurkat, mouse TCMK-1, and mouse NIH 3T3 cells. *Antibodies:* Affinity purified rabbit anti-Exportin-5 antibody A303-991A (lot A303-991A-1) used for WB at 0.1 µg/ml. *Detection:* Chemiluminescence with an exposure time of 10 seconds.



**Detection of human Exportin-5 by western blot of immunoprecipitates.** *Samples:* Whole cell lysate (1 mg for IP; 20% of IP loaded) from HEK293T cells. *Antibodies:* Affinity purified rabbit anti-Exportin-5 antibody A303-991A (lot A303-991A-1) used for IP at 6 µg/mg lysate. Exportin-5 was also immunoprecipitated by rabbit anti-Exportin-5 antibody BL14303. For blotting immunoprecipitated Exportin-5, A303-991A was used at 1 µg/ml. *Detection:* Chemiluminescence with an exposure time of 30 seconds.



**Detection of human Exportin-5 by immunohistochemistry.** *Samples:* FFPE sections of human breast carcinoma (left) and ovarian carcinoma (right). *Antibody:* Affinity purified rabbit anti-Exportin-5 (Cat. No. A303-991A Lot1) used at a dilution of 1:1,000 (1 µg/ml). *Detection:* DAB