

# DENTT Antibody

Rabbit Polyclonal

Antigen Affinity Purified

Protein ID NP\_071400.1

Catalog No. A304-013A

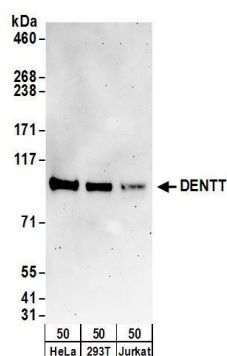
GeneID 64061

Lot No. A304-013A-1

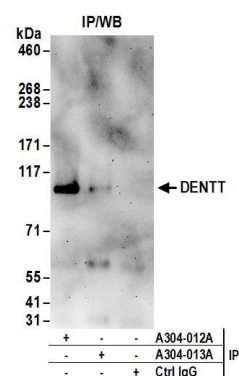


<b>APPLICATIONS</b>	WB, IHC						
<b>SPECIES REACTIVITY</b>	Human						
<b>AMOUNT</b>	100 µl						
<b>CONCENTRATION</b>	1000 µg/ml						
<b>STORAGE/SHELF LIFE</b>	2 - 8° C / 1 year from date of receipt						
<b>PHYSICAL STATE</b>	Liquid						
<b>BUFFER</b>	Tris-citrate/phosphate buffer, pH 7 to 8 containing 0.09% Sodium Azide						
<b>ISOTYPE</b>	IgG						
<b>ORIGIN</b>	USA						
<b>PRODUCTION PROCEDURES</b>	<p>Antibody was affinity purified using an epitope specific to DENTT immobilized on solid support.</p> <p>The epitope recognized by A304-013A maps to a region between residue 643 to 693 of human TSPY-Like 2 using the numbering given in entry NP_071400.1 (GeneID 64061).</p> <p>Antibody concentration was determined by extinction coefficient: absorbance at 280 nm of 1.4 equals 1.0 mg of IgG.</p>						
<b>APPLICATIONS</b>	<p>Centrifuge tube to remove product from lid. Optimal working dilutions should be determined experimentally by the investigator. Prepare working dilution immediately before use.</p> <table><tr><td>Western Blot</td><td>1:1,000 - 1:5,000</td></tr><tr><td>Immunoprecipitation</td><td>Not recommended</td></tr><tr><td>Immunohistochemistry</td><td>1:500 - 1:2,000. Epitope retrieval with citrate buffer pH 6.0 is recommended for FFPE tissue sections.</td></tr></table>	Western Blot	1:1,000 - 1:5,000	Immunoprecipitation	Not recommended	Immunohistochemistry	1:500 - 1:2,000. Epitope retrieval with citrate buffer pH 6.0 is recommended for FFPE tissue sections.
Western Blot	1:1,000 - 1:5,000						
Immunoprecipitation	Not recommended						
Immunohistochemistry	1:500 - 1:2,000. Epitope retrieval with citrate buffer pH 6.0 is recommended for FFPE tissue sections.						
<b>APPLICATION NOTES</b>	Western blot of lysates performed using standard western blot reagents and 4-8% SDS-PAGE.						
<b>IHC HUMAN CONTROLS</b>	Testis						
<b>ADDITIONAL INFO</b>	<p><a href="https://www.bethyl.com/product/A304-013A">https://www.bethyl.com/product/A304-013A</a></p> <p>Use the link above to view SDS, a current list of citations, and other product specific information.</p>						

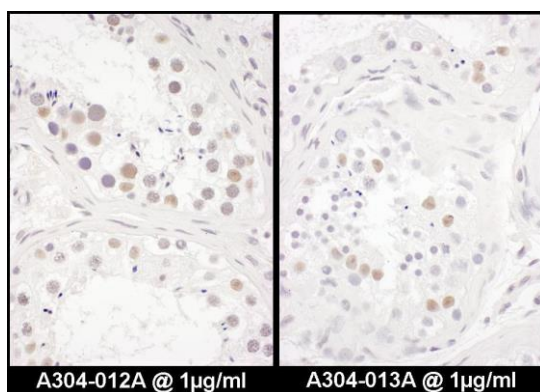
This document certifies that this product has met all of the quality control standards defined by Bethyl Laboratories, Inc.  
Eric McIntush, PhD | Chief Scientific Officer Date: June 21, 2019



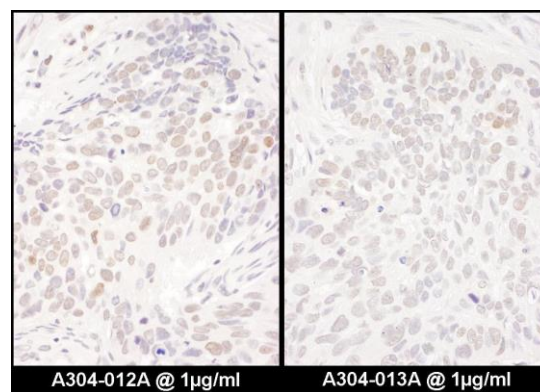
**Detection of human DENTT by western blot.** *Samples:* Whole cell lysate (50 µg) from HeLa, HEK293T, Jurkat cells. *Antibodies:* Affinity purified rabbit anti-DENTT antibody A304-013A (lot A304-013A-1) used for WB at 0.4 µg/ml. *Detection:* Chemiluminescence with an exposure time of 3 minutes.



**Detection of human DENTT by western blot of immunoprecipitates.** *Samples:* Whole cell lysate (1 mg for IP; 20% of IP loaded) from HeLa cells. *Antibodies:* Affinity purified rabbit anti-DENTT antibody A304-013A (lot A304-013A-1) used for IP at 6 µg/mg lysate. DENTT was also immunoprecipitated by rabbit anti-DENTT antibody A304-012A. For blotting immunoprecipitated DENTT, A304-013A was used at 1 µg/ml. *Detection:* Chemiluminescence with an exposure time of 3 minutes.



**Detection of human DENTT by immunohistochemistry.** *Samples:* FFPE serial sections of human testis. *Antibody:* Affinity purified rabbit anti-DENTT (Cat. No. A304-012A Lot1, left image and Cat. No. A304-013A Lot1, right image) used at a dilution of 1:1,000 (1 µg/ml). *Detection:* DAB



**Detection of human DENTT by immunohistochemistry.** *Samples:* FFPE serial sections of human lung cancer. *Antibody:* Affinity purified rabbit anti-DENTT (Cat. No. A304-012A Lot1, left image and Cat. No. A304-013A Lot1, right image) used at a dilution of 1:1,000 (1 µg/ml). *Detection:* DAB