

NRF Antibody

Rabbit Polyclonal

Antigen Affinity Purified	RefSeq ID	NP_001166959.1
Catalog No. A304-016A-T	Uniprot ID	O15226
Lot No. 1	GeneID	55922

APPLICATIONS	WB, IP, IHC
SPECIES REACTIVITY	Human
AMOUNT	10 µl
CONCENTRATION	1000 µg/ml
STORAGE/SHELF LIFE	2 – 8°C / 1 year from date of receipt
PHYSICAL STATE	Liquid
BUFFER	Tris-citrate/phosphate buffer, pH 7 to 8 containing 0.09% Sodium Azide
ISOTYPE	IgG
ORIGIN	USA
PRODUCTION PROCEDURES	Antibody was affinity purified using an epitope specific to NRF immobilized on solid support.

The epitope recognized by A304-016A-T maps to a region between residue 50 to 100 of human NFKB Repressing Factor using the numbering given in entry NP_001166959.1 (GeneID 55922).

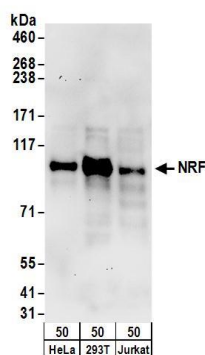
APPLICATIONS Centrifuge tube to remove product from lid. Optimal working dilutions should be determined experimentally by the investigator. Prepare working dilution immediately before use.

Western Blot	1:2000 – 1:10,000
Immunoprecipitation	6 µg/mg lysate
Immunohistochemistry	1:500 – 1:2000. Epitope retrieval with citrate buffer pH 6.0 is recommended for FFPE tissue sections.

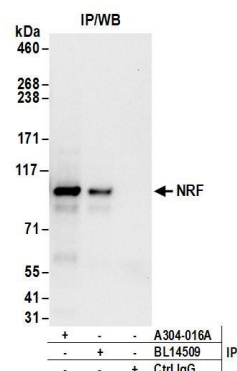
IHC HUMAN CONTROLS Breast Carcinoma, Non-Small Cell Lung Cancer

ADDITIONAL INFO <https://www.fortislife.com/p/A304-016A-T>
Use the link above to view SDS, a current list of citations, and other product specific information.

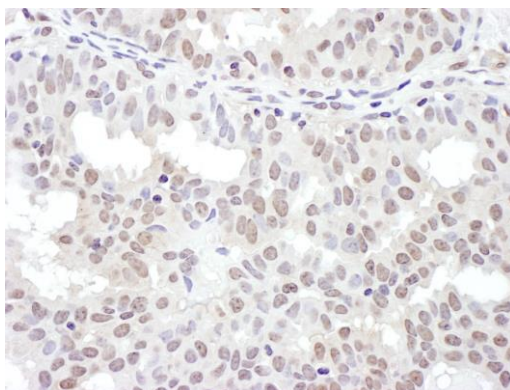
This document certifies that this product has met all of the quality control standards defined by Bethyl Laboratories, Inc.
Michael Spencer, PhD Date: January 8, 2024



Detection of human NRF by western blot. *Samples:* Whole cell lysate (50 µg) from HeLa, HEK293T, and Jurkat cells. *Antibodies:* Affinity purified rabbit anti-NRF antibody A304-016A (lot A304-016A-1) used for WB at 0.1 µg/ml. *Detection:* Chemiluminescence with an exposure time of 30 seconds.



Detection of human NRF by western blot of immunoprecipitates. *Samples:* Whole cell lysate (1 mg for IP; 20% of IP loaded) from HeLa cells. *Antibodies:* Affinity purified rabbit anti-NRF antibody A304-016A (lot A304-016A-1) used for IP at 6 µg/mg lysate. NRF was also immunoprecipitated by rabbit anti-NRF antibody BL14509. For blotting immunoprecipitated NRF, A304-016A was used at 1 µg/ml. *Detection:* Chemiluminescence with an exposure time of 10 seconds.



Detection of human NRF by immunohistochemistry. *Sample:* FFPE section of human non-small cell lung cancer. *Antibody:* Affinity purified rabbit anti-NRF (Cat. No. A304-016A Lot1) used at a dilution of 1:1,000 (1 µg/ml). *Detection:* DAB