

IRF8 Antibody

Rabbit Polyclonal

Antigen Affinity Purified

Protein ID NP_032346.1

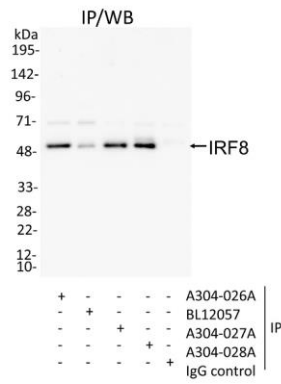
Catalog No. A304-026A

GeneID 15900

Lot No. A304-026A-1



APPLICATIONS	IP
SPECIES REACTIVITY	Mouse
PRESUMED REACTIVITY	Based on 100% sequence identity, this antibody is predicted to react with Human and Chicken
ISOTYPE	IgG
AMOUNT	100 µl at 1 mg/ml
STORAGE/SHELF LIFE	2 - 8° C / 1 year from date of receipt
PHYSICAL STATE	Liquid
BUFFER	Tris-citrate/phosphate buffer, pH 7 to 8 containing 0.09% Sodium Azide
ORIGIN	USA
PRODUCTION PROCEDURES	Antibody was affinity purified using an epitope specific to IRF8 immobilized on solid support. The epitope recognized by A304-026A maps to a region between residue 1 and 50 of mouse Interferon Regulatory Factor 8 using the numbering given in entry NP_032346.1 (GeneID 15900). Antibody concentration was determined by extinction coefficient: absorbance at 280 nm of 1.4 equals 1.0 mg of IgG.
APPLICATIONS	Centrifuge tube to remove product from lid. Optimal working dilutions should be determined experimentally by the investigator. Prepare working dilution immediately before use. Western Blot Not recommended Immunoprecipitation 2 - 10 µg/mg lysate
APPLICATION NOTES	Western blot of immunoprecipitates performed using ReliaBLOT® Reagents (Cat. No. WB120) and 4-20% SDS-PAGE.
ADDITIONAL INFO	http://www.bethyl.com/product/A304-026A Use the link above to view SDS, a current list of citations, and other product specific information.



Detection of mouse IRF8 by western blot of immunoprecipitates. *Samples:* Whole cell lysate (0.5 mg for IP, 20% of IP loaded) from RAW 264.7 cells. *Antibodies:* Affinity purified rabbit anti-IRF8 antibody A304-026A (lot A304-026A-1) used for IP at 6 µg/mg lysate. IRF8 was also immunoprecipitated by rabbit anti-IRF8 antibodies BL12057, A304-027A and A304-028A. For blotting immunoprecipitated IRF8, A304-028A was used at 1 µg/ml. *Detection:* Chemiluminescence with an exposure time of 30 seconds.