

# IRF8 Antibody

Rabbit Polyclonal

Antigen Affinity Purified

Catalog No. A304-028A

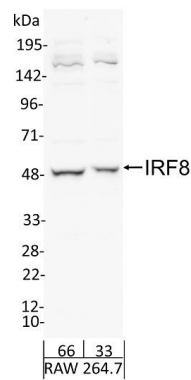
Lot No. A304-028A-1

Protein ID NP\_032346.1

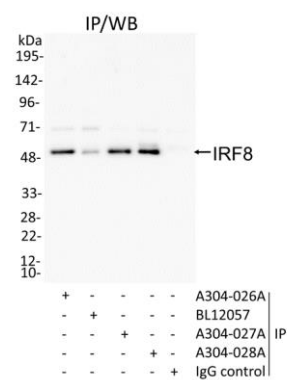
GeneID 15900



<b>APPLICATIONS</b>	WB, IP
<b>SPECIES REACTIVITY</b>	Mouse
<b>ISOTYPE</b>	IgG
<b>AMOUNT</b>	100 µl at 1 mg/ml
<b>STORAGE/SHELF LIFE</b>	2 – 8° C / 1 year from date of receipt
<b>PHYSICAL STATE</b>	Liquid
<b>BUFFER</b>	Tris-citrate/phosphate buffer, pH 7 to 8 containing 0.09% Sodium Azide
<b>ORIGIN</b>	USA
<b>PRODUCTION PROCEDURES</b>	<p>Antibody was affinity purified using an epitope specific to IRF8 immobilized on solid support.</p> <p>The epitope recognized by A304-028A maps to a region between residue 374 and 424 of mouse Interferon Regulatory Factor 8 using the numbering given in entry NP_032346.1 (GeneID 15900).</p> <p>Antibody concentration was determined by extinction coefficient: absorbance at 280 nm of 1.4 equals 1.0 mg of IgG.</p>
<b>APPLICATIONS</b>	<p>Centrifuge tube to remove product from lid. Optimal working dilutions should be determined experimentally by the investigator. Prepare working dilution immediately before use.</p> <p>Western Blot 1:2,000 – 1:10,000</p> <p>Immunoprecipitation 2 – 10 µg/mg lysate</p>
<b>APPLICATION NOTES</b>	<p>Western blot of immunoprecipitates performed using ReliaBLOT® Reagents (Cat. No. WB120) and 4–20% SDS–PAGE.</p> <p>Western blot of lysates performed using standard western blot reagents and 4–20% SDS–PAGE.</p>
<b>ADDITIONAL INFO</b>	<p><a href="http://www.bethyl.com/product/A304-028A">http://www.bethyl.com/product/A304-028A</a></p> <p>Use the link above to view SDS, a current list of citations, and other product specific information.</p>



**Detection of mouse IRF8 by western blot.** *Samples:* Whole cell lysate from RAW 264.7 (66 and 33  $\mu$ g ). *Antibodies:* Affinity purified rabbit anti-IRF8 antibody A304-028A (lot A304-028A-1) used for WB at 1.0  $\mu$ g/ml. *Detection:* Chemiluminescence with exposure time of 30 seconds.



**Detection of mouse IRF8 by western blot of immunoprecipitates.** *Samples:* Whole cell lysate (0.5 mg for IP, 20% of IP loaded) from RAW 264.7 cells. *Antibodies:* Affinity purified rabbit anti-IRF8 antibody A304-028A (lot A304-028A-1) used for IP at 6  $\mu$ g/mg lysate. IRF8 was also immunoprecipitated by rabbit anti-IRF8 antibodies BL12057, A304-026A and A304-027A. For blotting immunoprecipitated IRF8, A304-028A was used at 1  $\mu$ g/ml. *Detection:* Chemiluminescence with an exposure time of 30 seconds.