

# Gamma-Taxilin Antibody

Rabbit Polyclonal

Antigen Affinity Purified

Protein ID NP\_060830.2

Catalog No. A304-041A-M

GeneID 55787

Lot No. A304-041A-M-1



<b>APPLICATIONS</b>	WB, IP
<b>SPECIES REACTIVITY</b>	Human
<b>AMOUNT</b>	100 µl (10 blots)
<b>CONCENTRATION</b>	40 µg/ml
<b>STORAGE/SHELF LIFE</b>	2 - 8° C / 1 year from date of receipt
<b>PHYSICAL STATE</b>	Liquid
<b>BUFFER</b>	Tris-buffered Saline containing 0.1% BSA and 0.09% Sodium Azide
<b>ISOTYPE</b>	IgG
<b>ORIGIN</b>	USA
<b>PRODUCTION PROCEDURES</b>	Antibody was affinity purified using an epitope specific to Gamma-Taxilin immobilized on solid support.

The epitope recognized by A304-041A-M maps to a region between residue 25 to 75 of human Taxilin Gamma using the numbering given in entry NP\_060830.2 (GeneID 55787).

**APPLICATIONS** Centrifuge tube to remove product from lid. Optimal working dilutions should be determined experimentally by the investigator. Prepare working dilution immediately before use.

Western Blot 1:1000

Immunoprecipitation The antibody contained within A304-041A-M has been qualified for use in immunoprecipitation; however, we recommend using the alternative formulation of this antibody found as product A304-041A.

**APPLICATION NOTES** Western blot of immunoprecipitates performed using Normal Pig Serum (Cat. No. S100-020), Goat anti-Rabbit Light Chain HRP Conjugate (Cat. No. A120-113P) and 4-20% SDS-PAGE (link to IP-western blot protocol in Additional Info section below).

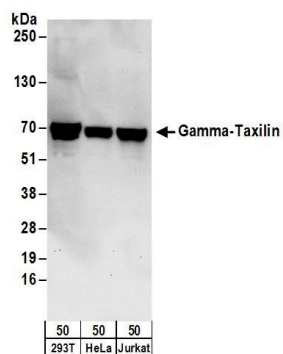
Western blot of lysates performed using standard western blot reagents and 4-20% SDS-PAGE.

**ADDITIONAL INFO** <https://www.bethyl.com/product/A304-041A-M>

Use the link above to view SDS, a current list of citations, and other product specific information.

IP-western blot protocol: [https://www.bethyl.com/content/protocol\\_IP\\_WB](https://www.bethyl.com/content/protocol_IP_WB)

This document certifies that this product has met all of the quality control standards defined by Bethyl Laboratories, Inc.  
Eric McIntush, PhD | Chief Scientific Officer Date: June 21, 2019

**Detection of human Gamma-Taxilin by western blot.**

*Samples:* Whole cell lysate (50 µg) from HEK293T, HeLa, and Jurkat cells. *Antibody:* Affinity purified rabbit anti-Gamma-Taxilin antibody A304-041A-M used at 1:1000. *Detection:* Chemiluminescence with an exposure time of 30 seconds.