

Gamma-Taxilin Antibody

Rabbit Polyclonal

Antigen Affinity Purified

Protein ID NP_060830.2

Catalog No. A304-042A-M

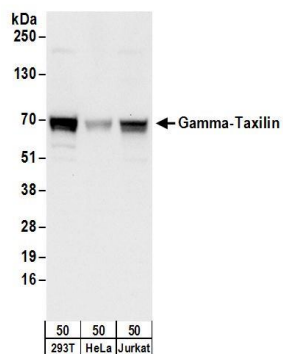
GeneID 55787

Lot No. A304-042A-M-1



APPLICATIONS	WB, IP				
SPECIES REACTIVITY	Human				
AMOUNT	100 µl (10 blots)				
CONCENTRATION	100 µg/ml				
STORAGE/SHELF LIFE	2 - 8° C / 1 year from date of receipt				
PHYSICAL STATE	Liquid				
BUFFER	Tris-buffered Saline containing 0.1% BSA and 0.09% Sodium Azide				
ISOTYPE	IgG				
ORIGIN	USA				
PRODUCTION PROCEDURES	<p>Antibody was affinity purified using an epitope specific to Gamma-Taxilin immobilized on solid support.</p> <p>The epitope recognized by A304-042A-M maps to a region between residue 475 to 525 of human Taxilin Gamma using the numbering given in entry NP_060830.2 (GeneID 55787). The epitopes for anti-ABT1 antibodies A304-044A and A304-045A are in close proximity, but do not overlap.</p>				
APPLICATIONS	<p>Centrifuge tube to remove product from lid. Optimal working dilutions should be determined experimentally by the investigator. Prepare working dilution immediately before use.</p> <table><tr><td>Western Blot</td><td>1:1000</td></tr><tr><td>Immunoprecipitation</td><td>The antibody contained within A304-042A-M has been qualified for use in immunoprecipitation; however, we recommend using the alternative formulation of this antibody found as product A304-042A.</td></tr></table>	Western Blot	1:1000	Immunoprecipitation	The antibody contained within A304-042A-M has been qualified for use in immunoprecipitation; however, we recommend using the alternative formulation of this antibody found as product A304-042A.
Western Blot	1:1000				
Immunoprecipitation	The antibody contained within A304-042A-M has been qualified for use in immunoprecipitation; however, we recommend using the alternative formulation of this antibody found as product A304-042A.				
APPLICATION NOTES	<p>Western blot of immunoprecipitates performed using Normal Pig Serum (Cat. No. S100-020), Goat anti-Rabbit Light Chain HRP Conjugate (Cat. No. A120-113P) and 4-20% SDS-PAGE (link to IP-western blot protocol in Additional Info section below).</p> <p>Western blot of lysates performed using standard western blot reagents and 4-20% SDS-PAGE.</p>				
ADDITIONAL INFO	<p>https://www.bethyl.com/product/A304-042A-M</p> <p>Use the link above to view SDS, a current list of citations, and other product specific information.</p> <p>IP-western blot protocol: https://www.bethyl.com/content/protocol_IP_WB</p>				

This document certifies that this product has met all of the quality control standards defined by Bethyl Laboratories, Inc.
Eric McIntush, PhD | Chief Scientific Officer Date: June 21, 2019

**Detection of human Gamma-Taxilin by western blot.**

Samples: Whole cell lysate (50 µg) from HEK293T, HeLa, and Jurkat cells. *Antibody:* Affinity purified rabbit anti-Gamma-Taxilin antibody A304-042A-M used at 1:1000. *Detection:* Chemiluminescence with an exposure time of 10 seconds.