

Gamma-Taxilin Antibody

Rabbit Polyclonal

Antigen Affinity Purified

Protein ID NP_060830.2

Catalog No. A304-043A

GeneID 55787

Lot No. A304-043A-1



APPLICATIONS	WB, IP
SPECIES REACTIVITY	Human, Mouse
AMOUNT	100 µl
CONCENTRATION	1000 µg/ml
STORAGE/SHELF LIFE	2 - 8° C / 1 year from date of receipt
PHYSICAL STATE	Liquid
BUFFER	Tris-citrate/phosphate buffer, pH 7 to 8 containing 0.09% Sodium Azide
ISOTYPE	IgG
ORIGIN	USA
PRODUCTION PROCEDURES	Antibody was affinity purified using an epitope specific to Gamma-Taxilin immobilized on solid support.

The epitope recognized by A304-043A maps to a region between residue 478 to 528 of human Taxilin Gamma using the numbering given in entry NP_060830.2 (GeneID 55787).

The epitopes for anti-Gamma Taxilin antibodies A304-042A and A304-043A are in close proximity, but do not overlap.

Antibody concentration was determined by extinction coefficient: absorbance at 280 nm of 1.4 equals 1.0 mg of IgG.

APPLICATIONS Centrifuge tube to remove product from lid. Optimal working dilutions should be determined experimentally by the investigator. Prepare working dilution immediately before use.

Western Blot 1:5,000 – 1:25,000

Immunoprecipitation 2 – 10 µg/mg lysate

APPLICATION NOTES Western blot of immunoprecipitates performed using Normal Pig Serum (Cat. No. S100-020), Goat anti-Rabbit Light Chain HRP Conjugate (Cat. No. A120-113P) and 4-20% SDS-PAGE (link to IP-western blot protocol in Additional Info section below).

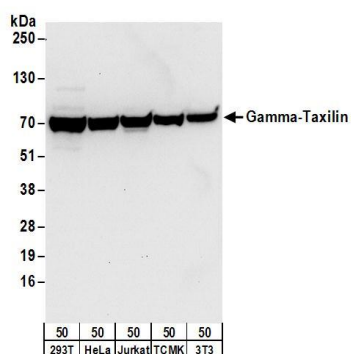
Western blot of lysates performed using standard western blot reagents and 4-20% SDS-PAGE.

ADDITIONAL INFO <https://www.bethyl.com/product/A304-043A>

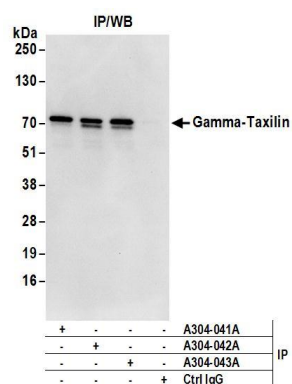
Use the link above to view SDS, a current list of citations, and other product specific information.

IP-western blot protocol: https://www.bethyl.com/content/protocol_IP_WB

This document certifies that this product has met all of the quality control standards defined by Bethyl Laboratories, Inc.
Eric McIntush, PhD | Chief Scientific Officer Date: June 21, 2019



Detection of human and mouse Gamma-Taxilin by western blot. *Samples:* Whole cell lysate (50 µg) from HEK293T, HeLa, Jurkat, mouse TCMK-1, and mouse NIH 3T3 cells. *Antibodies:* Affinity purified rabbit anti-Gamma-Taxilin antibody A304-043A (lot A304-043A-1) used for WB at 0.04 µg/ml. *Detection:* Chemiluminescence with an exposure time of 10 seconds.



Detection of human Gamma-Taxilin by western blot of immunoprecipitates. *Samples:* Whole cell lysate (1 mg for IP; 20% of IP loaded) from HEK293T cells. *Antibodies:* Affinity purified rabbit anti-Gamma-Taxilin antibody A304-043A (lot A304-043A-1) used for IP at 6 µg/mg lysate. Gamma-Taxilin was also immunoprecipitated by rabbit anti-Gamma-Taxilin antibodies A304-041A and A304-042A. For blotting immunoprecipitated Gamma-Taxilin, A304-043A was used at 1 µg/ml. *Detection:* Chemiluminescence with an exposure time of 3 seconds.